

Series CGB guided parallel grippers

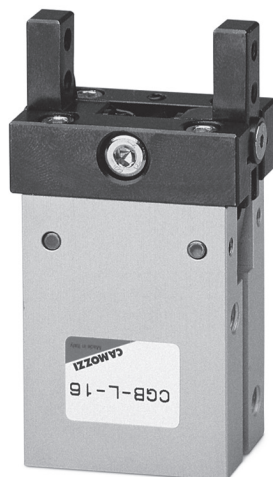
Running out of stock

1

MOVEMENT

Magnetic

Sizes 16 - 20 - 25 - 32 mm



- » Guided mechanism which allows high repeatability
- » Flexibility in installation
- » High gripping force

The proximity switches can be inserted in the U-shaped grooves on the body. For an easier installation the gripper can also be equipped with an optional installation adaptor mod. C-CGP (female) or L-CGP (male).

Series CGB guided parallel grippers are available in 4 different sizes and are equipped with a guide mechanism that offers high repeatability. The closing action of the gripper is generated from the cylinder's thrust side, resulting in a higher gripping force. Series CGB gripper has mounting holes on three sides which provides flexibility in installation.

GENERAL DATA

Model	CGB-L-16; CGB-L-20; CGB-L-25; CGB-L-32			
Bore sizes (mm)	Ø16	Ø 20	Ø 25	Ø 32
Type of operation	double-acting, parallel type			
Operating pressure (bar)	1.5 ÷ 7 bar			
Operating temperature	0°C + 80°C			
Max. operating frequency	180 cycles/min			
Lubrication	lever section - lubrication required on sliding section			
Opening stroke (mm)	Ø 16 = 6	Ø 20 = 8	Ø 25 = 14	Ø 32 = 16
Theoretical gripping force at 5 bar - opening (N)	Ø 16 = 24	Ø 20 = 47	Ø 25 = 75	Ø 32 = 100
with gripping point L = 30mm (closing)	Ø 16 = 18	Ø 20 = 35	Ø 25 = 60	Ø 32 = 85
Max length of gripping point L at 5 bar pressure	40	60	80	100
Weight (g)	Ø 16 = 160	Ø 20 = 280	Ø 25 = 495	Ø 32 = 785
Repeatability	+/- 0,01mm			
Port sizes	M5			
Fluid	filtered air, without lubrication. If lubricated air is used, it is recommended to use oil ISO VG32. Once applied, the lubrication should never be interrupted.			

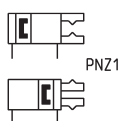
CODING EXAMPLE

CGB	-	L	-	20
-----	---	---	---	----

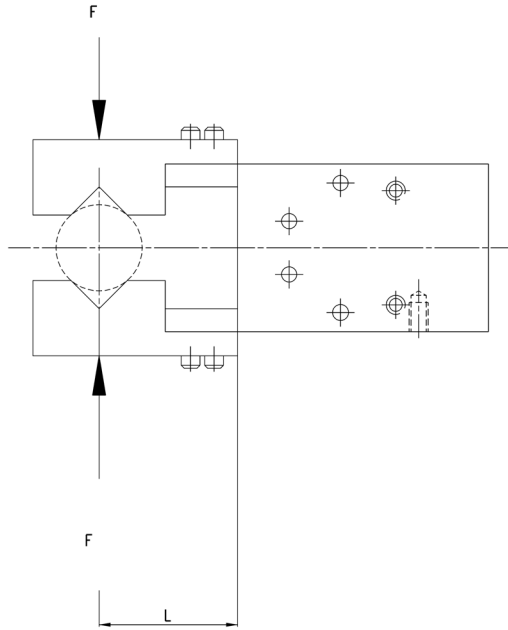
CGB	SERIES	PNEUMATIC SYMBOL
L	TYPE L = Wide finger position style S = Narrow finger position style (only on request)	PNZ1
20	SIZES 16 = ø 16 mm 20 = ø 20 mm 25 = ø 25 mm 32 = ø 32 mm	

PNEUMATIC SYMBOLS

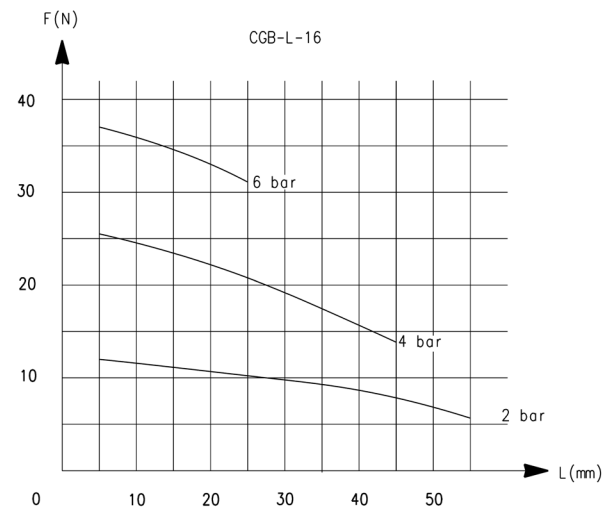
The pneumatic symbols which have been indicated in the CODING EXAMPLE are shown below.



GRIPPING FORCE CHARACTERISTICS

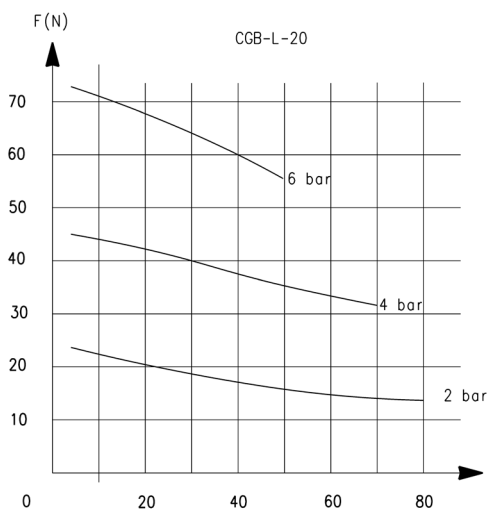


L = Gripping point length
F = Gripping Force

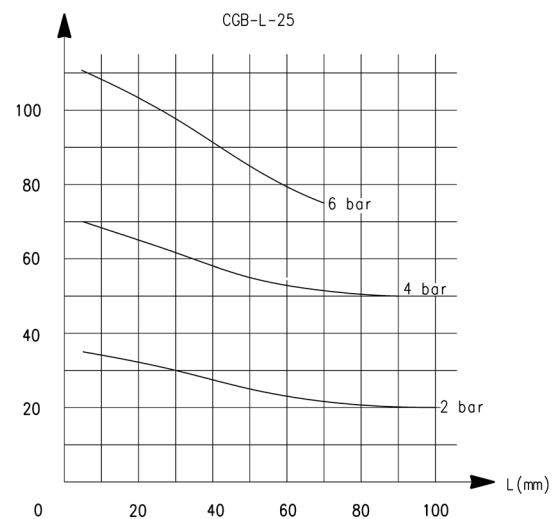


L = Gripping point length
F = Gripping Force

GRIPPING FORCE CHARACTERISTICS

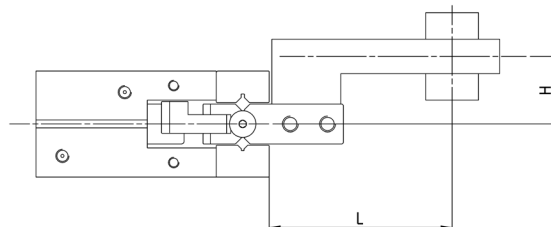
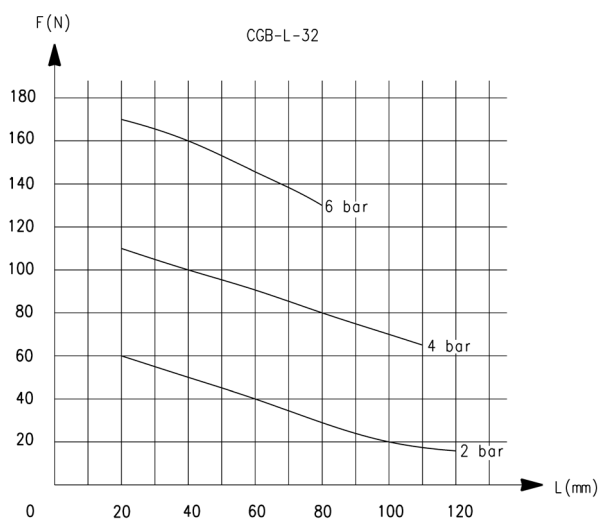


L = Gripping point length
F = Gripping Force



L = Gripping point length
F = Gripping Force

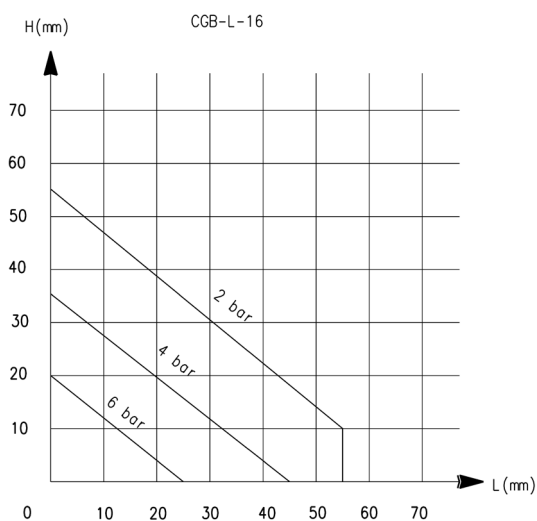
GRIPPING FORCE CHARACTERISTICS



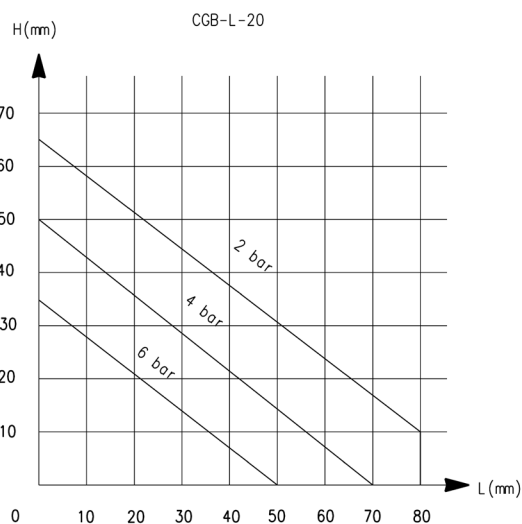
L = Gripping point length
F = Gripping Force

L = Gripping point length
F = Gripping Force

GRIPPING POINT CHARACTERISTICS



L = length of the gripping point (mm)
H = height from the gripping point (mm)

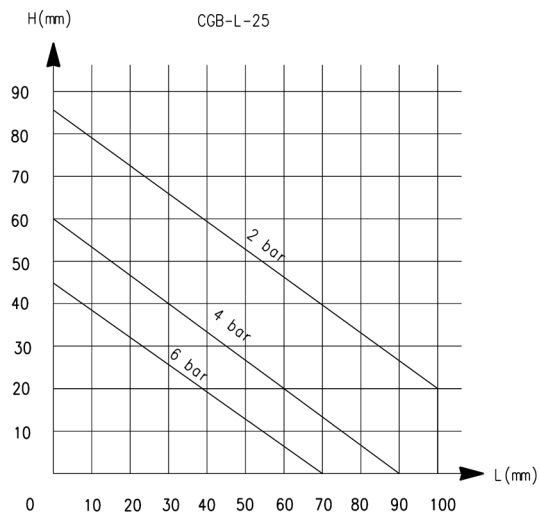


L = length of the gripping point (mm)
H = height from the gripping point (mm)

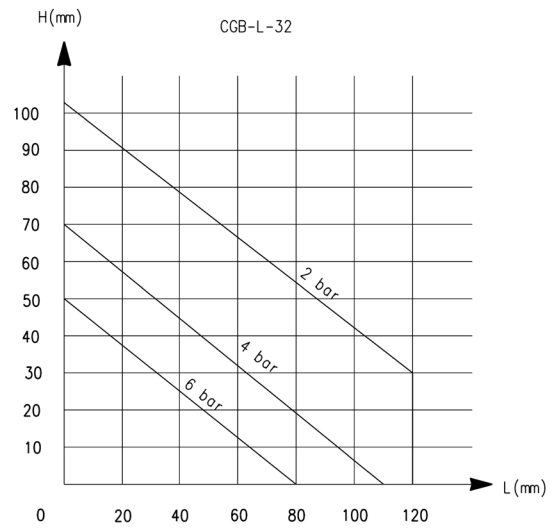
GRIPPING POINT CHARACTERISTICS

1

MOVEMENT

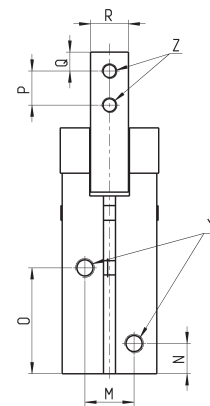
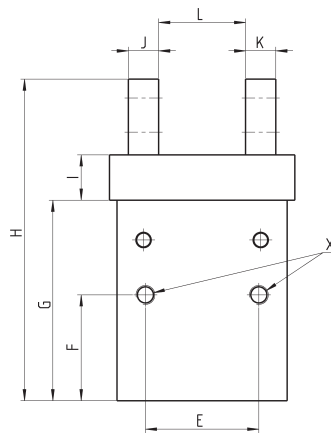
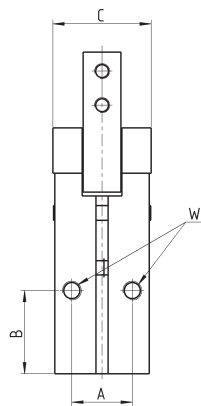
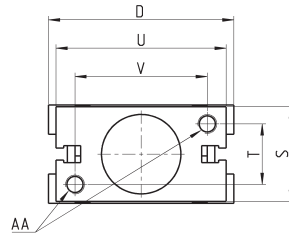


L = length of the gripping point (mm)
H = height from the gripping point (mm)



L = length of the gripping point (mm)
H = height from the gripping point (mm)

Guided parallel grippers Series CGB-L



Y = port connection
Z = claw mounting-hole
X, W, AA = Mounting hole

DIMENSIONS

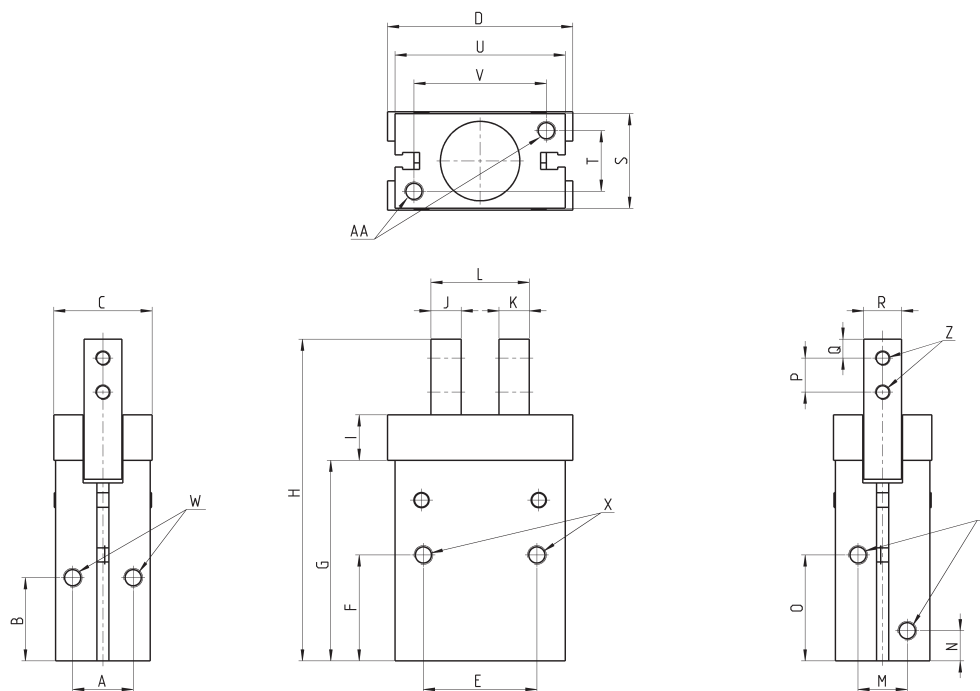
Mod.	A	B	C	D	E	F	G	H	I	J	K	L closed	L open	M	N	O	P	Q	R	S	T	U	V
CGB-L-16	14	21	22	38	24	25,5	45,5	72,5	12	6	6	18	24	12	7,5	25,5	7	4	7	22	14	34	26
CGB-L-20	16	22	26	49	30	28	53	85	12	8	8	23	31	13	8	28	9	5	10	26	16	45	35
CGB-L-25	20	24,5	32	56	36	31,5	63,5	104,5	16	10	10	20	34	18	9	31	12	6	12	32	20	52	40
CGB-L-32	26	30	40	62	44	37,5	68	116	20	10	10	24	40	24	10	33,5	14	6	15	40	26	60	46

DIMENSIONS

Mod.	X thread	X depth	Y thread	Y depth	W thread	W depth	Z thread	Z depth	AA thread	AA depth
CGB-L-16	M4	11	M5	5	M4	7	M3	-	M4	7
CGB-L-20	M5	13	M5	5	M5	8	M4	-	M5	8
CGB-L-25	M6	16	M5	5	M6	10	M5	-	M6	10
CGB-L-32	M6	20	M5	8	M6	10	M6	-	M6	10

Guided parallel grippers (narrow opening) Series CGB-S

On demand only



DIMENSIONS

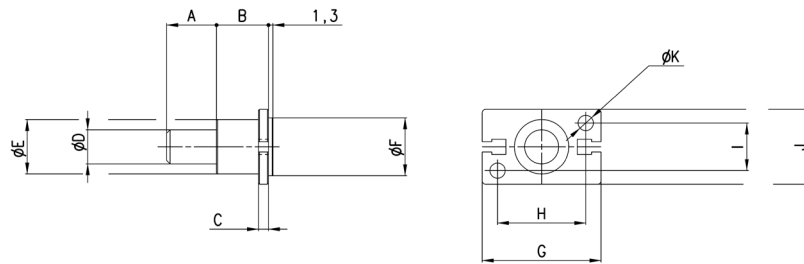
Mod.	A	B	C	D	E	F	G	H	I	J	K	L closed	L open	M	N	O	P	Q	R	S	T	U	V
CGB-S-16	14	21	22	38	24	25,5	45,5	72,5	12	6	6	18	25	12	7,5	25,5	7	4	7	22	14	34	26
CGB-S-20	16	22	26	49	30	28	53	85	12	8	8	22,9	30,9	13	8	28	9	5	10	26	16	45	35
CGB-S-25	20	24,5	32	56	36	31,5	63,5	104,5	16	10	10	28,4	42	18	9	31	12	6	12	32	20	52	40
CGB-S-32	26	30	40	62	44	37,5	68	116	20	10	10	28	43,5	24	10	33,5	14	6	15	40	26	60	46

DIMENSIONS

Mod.	X thread	X depth	Y thread	Y depth	W thread	W depth	Z thread	Z depth	AA thread	AA depth
CGB-S-16	M4	11	M5	5	M4	7	M3	-	M4	7
CGB-S-20	M5	13	M5	5	M5	8	M4	-	M5	8
CGB-S-25	M6	16	M5	5	M6	10	M5	-	M6	10
CGB-S-32	M6	20	M5	8	M6	10	M6	-	M6	10

Mounting brackets Mod. L-CGP

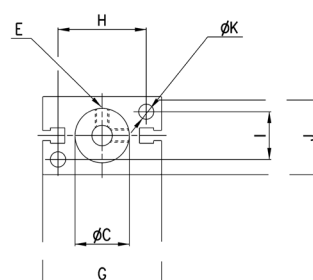
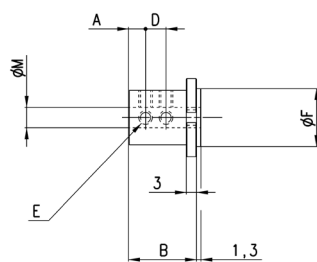
for gripper Series CGA, CGP, CGS and CGB



Mod.	A	B	C	D	E	F	G	H	I	J	K
L-CGP-16	15	15	3	10	16	17	35	26	14	22	4,5
L-CGP-20	15	15	3	10	18	21	46	35	16	26	5,5
L-CGP-25	25	17	5	14	26	26	53	40	20	32	6,6
L-CGP-32	25	20	6	16	30	34	61	46	26	40	6,6

Mounting brackets Mod. C-CGP

for gripper Series CGA, CGP, CGS and CGB



Mod.	A	B	C	D	E	F	G	H	I	J	K	M
C-CGP-16	5	20,5	16	7	M4	17	35	26	14	23	4,5	6
C-CGP-20	7	25,5	20	9	M4	21	46	35	16	27	5,5	8
C-CGP-25	8	30,5	25	10	M4	26	53	40	20	33	6,6	10
C-CGP-32	10	40,5	32	15	M4	34	61	46	26	41	6,6	12