

Series CGP parallel grippers

Magnetic

Sizes 10 - 16 - 20 - 25 - 32 mm

1

MOVEMENT

- » High durability
- » Compact design
- » High gripping force



The proximity switches can be inserted in the U-shaped grooves on the body. For an easier installation the gripper can also be equipped with an optional installation adaptor mod. C-CGP (female) or L-CGP (male).

Series CGP parallel grippers are available in 5 different sizes.

The closing action of the gripper is generated from the cylinder's thrust side, resulting in a higher gripping force. The gripper is equipped with ring bearings in the sliding section for higher durability. Gripper mod. CGP has mounting holes on three sides which provides flexibility in installation.

GENERAL DATA

Model	CGP-10	CGP-16	CGP-20	CGP-25	CGP-32
Bore sizes (mm)	Ø 10	Ø 16	Ø 20	Ø 25	Ø 32
Type of operation	double-acting				
Operating pressure	1.5 ÷ 7 bar				
Operating temperature	0°C ÷ 80°C				
Max. operating frequency	180 cycles/min				
Lubrication	lever section - lubrication required on sliding section				
Opening stroke (mm)	Ø 10 = 4	Ø 16 = 8	Ø 20 = 12	Ø 25 = 14	Ø 32 = 16
Theoretical holding force - opening (N)	Ø 10 = 8	Ø 16 = 24	Ø 20 = 47	Ø 25 = 75	Ø 32 = 100
	P = Related to a pressure of 5 bar with gripping point length 3 cm				
Theoretical holding force - closing (N)	Ø 10 = 5	Ø 16 = 8	Ø 25 = 35	Ø 25 = 60	Ø 32 = 85
	P = Related to a pressure of 5 bar with gripping point length 3 cm				
Length of max gripping point L (cm)	3,0	4,0	6,0	7,0	8,5
	L = Related to a pressure of 5 bar				
Weight(g)	Ø 10 = 50	Ø 16 = 140	Ø 20 = 250	Ø 25 = 410	Ø 32 = 680
Port sizes	M5 (CGP-10 M3)				
Fluid	filtered air, without lubrication. In case lubricated air is used, it is recommended to use oil ISO VG32. Once applied, the lubrication should never be interrupted.				

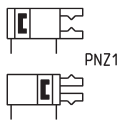
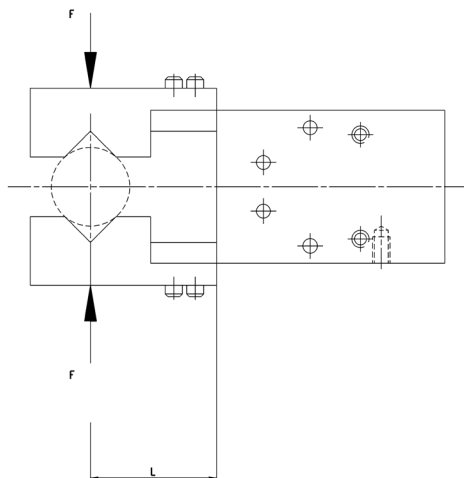
CODING EXAMPLE

CGP	-	20
-----	---	----

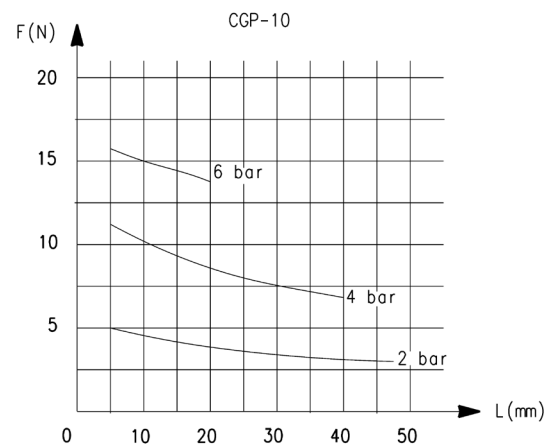
CGP	SERIES	PNEUMATIC SYMBOL PNZ1
20	SIZES 10 = ø 10 mm 16 = ø 16 mm 20 = ø 20 mm 25 = ø 25 mm 32 = ø 32 mm	

PNEUMATIC SYMBOLS

The pneumatic symbols which have been indicated in the CODING EXAMPLE are shown below.

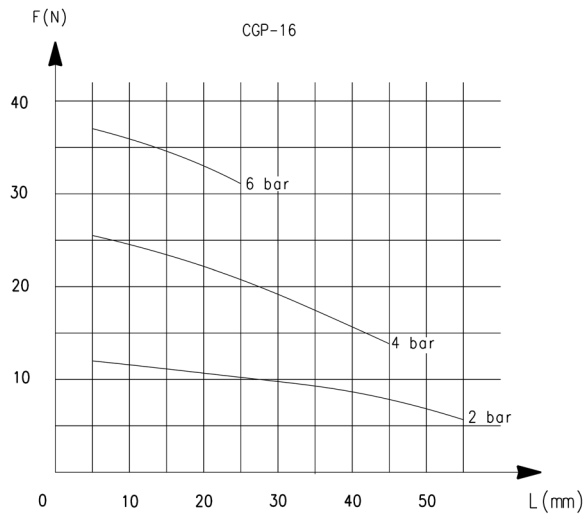

GRIPPING FORCE CHARACTERISTICS


L = Gripping point length
F = Gripping Force

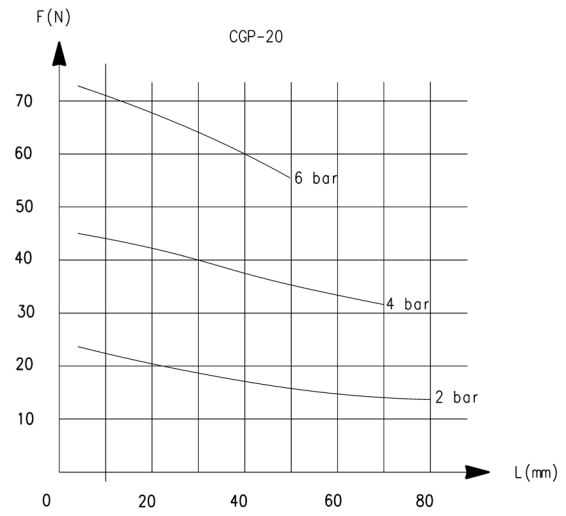


L = Gripping point length
F = Gripping Force

GRIPPING FORCE CHARACTERISTICS

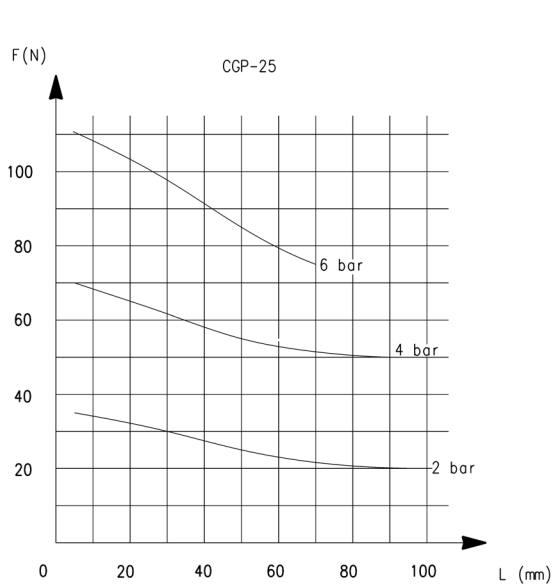


L = Gripping point length
F = Gripping Force

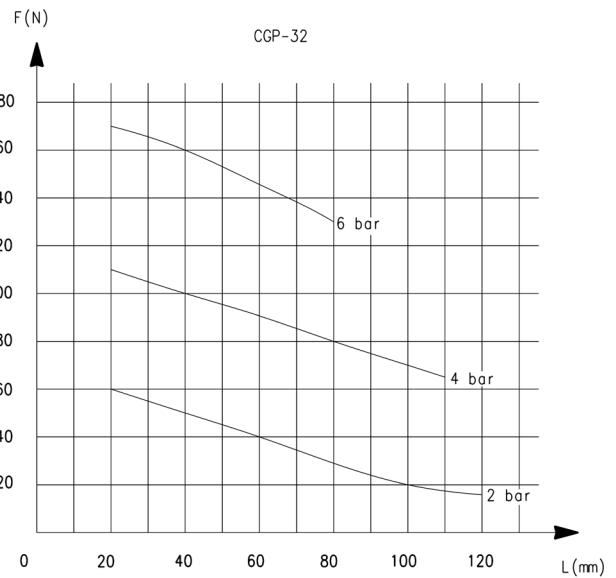


L = Gripping point length
F = Gripping Force

GRIPPING FORCE CHARACTERISTICS

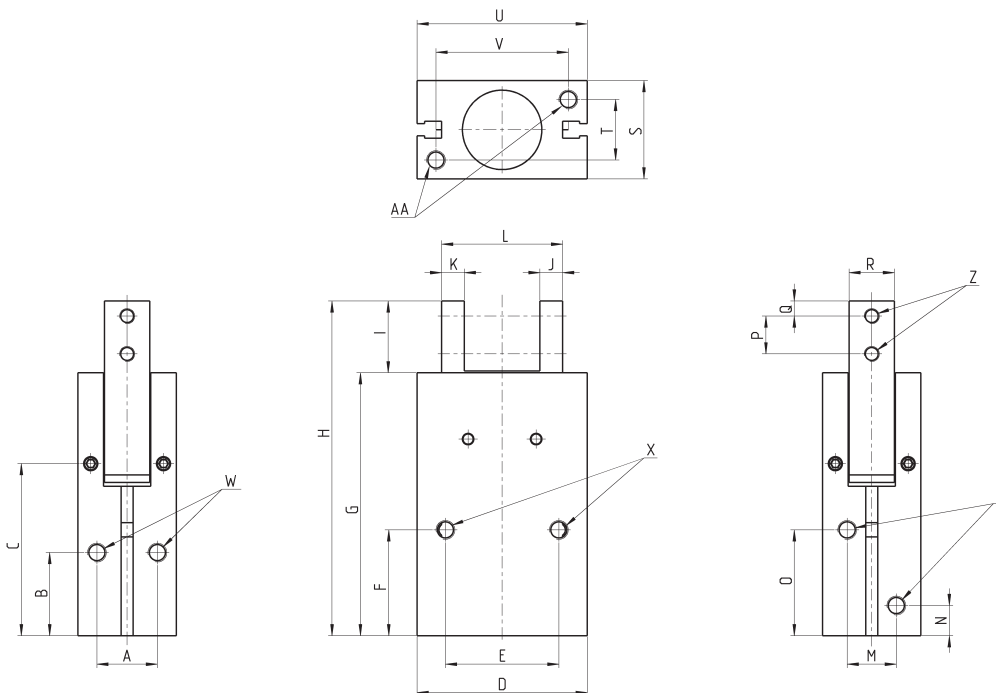


L = Gripping point length
F = Gripping Force



L = Gripping point length
F = Gripping Force

Parallel grippers Series CGP



Y = port connection
 Z = claw mounting-holes
 X.W.AA = Mounting holes

DIMENSIONS

Mod.	A	B	C	D	E	F	G	H	I	J	K	L closed	L open	M	N	O	P	Q	R	S	T	U	V
CGP-10	10	15,5	31,5	23	18	20	45	58	13	4	4	18	22	10	7,5	19	6	3	7	16	10	23	17
CGP-16	14	21	39,5	34	24	25,5	58,8	73,5	15	5	5	25	33	12	7,5	25,5	8	3	11	22	14	34	26
CGP-20	16	22	45,5	45	30	28	69,5	88,5	19	6	6	32	44	13	8	28	10	4	12	26	16	45	35
CGP-25	20	24,5	51	52	36	31,5	79,5	103,5	24	8	8	37	51	18	9	31	12	5	14	32	20	52	40
CGP-32	26	30	56	60	44	37,5	88	119	31	9	9	44	60	24	10	35	15	7	18	40	26	60	46

DIMENSIONS

Mod.	X thread	X depth	Y thread	Y depth	W thread	W depth	Z thread	Z depth	AA thread	AA depth
CGP-10	M3	7	M3	-	M3	5	M3	-	M3	5
CGP-16	M4	11	M5	-	M4	7	M3	-	M4	7
CGP-20	M5	13	M5	-	M4	8	M4	-	M5	8
CGP-25	M6	14	M5	-	M6	10	M5	-	M6	10
CGP-32	M6	20	M5	-	M6	10	M6	-	M6	10