

Series CGA angular grippers

Magnetic

Sizes 10, 16, 20, 25, 32

1

MOVEMENT

- » Compact design
- » Flexible mounting
- » Optional mounting adaptors



For an easier installation the gripper can also be equipped with an optional installation adaptor mod. C-CGP (female) or L-CGP (male).

Series CGA angular grippers are available in 5 different sizes. The gripper opens and closes at angles between -10° and $+30^{\circ}$. The proximity switches can be inserted in the U-shaped grooves on the body.

Grippers Series CGA have mounting holes on three sides which provide flexibility in installation.

GENERAL DATA

Model	CGA-10; CGA-16; CGA-20; CGA-25; CGA-32					
Bore sizes	\varnothing 10; \varnothing 16; \varnothing 20; \varnothing 25; \varnothing 32					
Type of operation	double-acting					
Operating pressure	1.5 ÷ 7 bar					
Operating temperature	0 ÷ 80°C					
Max. operating frequency	180 cycles/min					
Lubrication	lever section - lubrication required on sliding section					
Grip moment - closed M (Ncm)	1,6xP	8xP	17xP	34xP	61xP	P = operating pressure (bar)
Grip moment - open M (Ncm)	2,6xP	11xP	23xP	43xP	81xP	
Effective gripping force F (N)	F = M/L x 0,85		L = distance of gripping point (cm)			
Length of la. gripping point L (cm)	3,0	4,0	6,0	7,0	8,5	
Weight (g)	\varnothing 10 = 40	\varnothing 16 = 100	\varnothing 20 = 200	\varnothing 25 = 330	\varnothing 32 = 540	
Lever open / closed angles	-10° ÷		$+30^{\circ}$			
Port sizes	M5 (CGA-10 M3)					
Magnet	magnet for proximity sensors in piston					
Fluid	filtered air, without lubrication. If lubricated air is used, it is recommended to use oil ISOVG32. Once applied the lubrication should never be interrupted.					

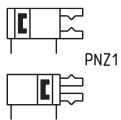
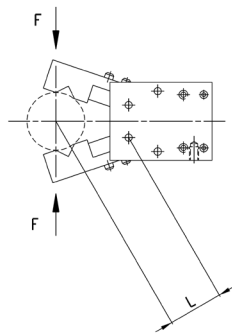
CODING EXAMPLE

CGA	-	20
-----	---	----

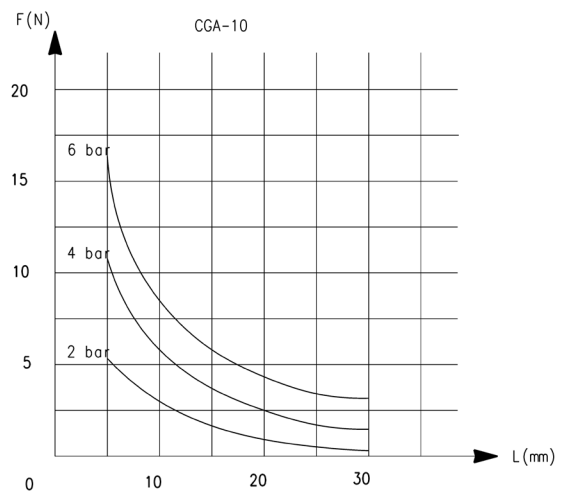
CGA	SERIES	PNEUMATIC SYMBOL
20	SIZES 10 = ø 10 mm 16 = ø 16 mm 20 = ø 20 mm 25 = ø 25 mm 32 = ø 32 mm	PNZ1

PNEUMATIC SYMBOLS

The pneumatic symbols which have been indicated in the CODING EXAMPLE are shown below.

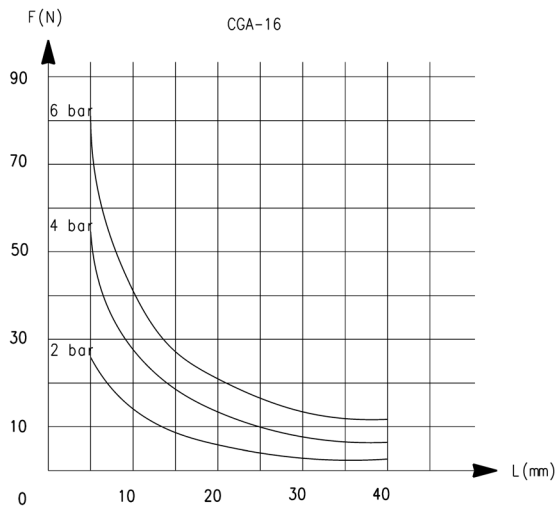

CLOSING GRIPPING FORCE - CHARACTERISTICS


L = Length of gripping point
F = Gripping force

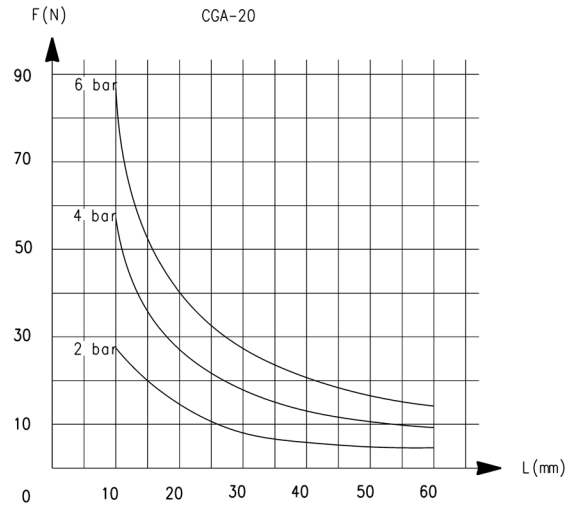


L = Length of gripping point
F = Gripping force

CLOSING GRIPPING FORCE - CHARACTERISTICS

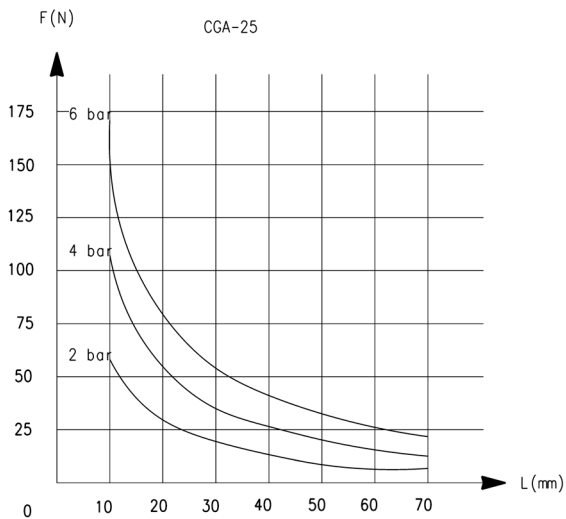


L = Length of gripping point
F = Gripping force

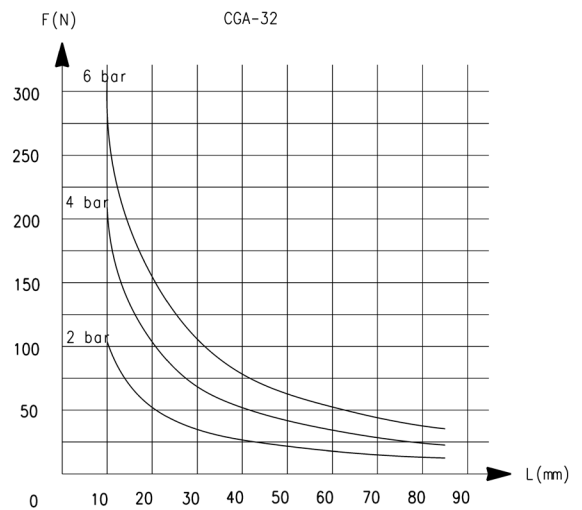


L = Length of gripping point
F = Gripping force

CLOSING GRIPPING FORCE - CHARACTERISTICS

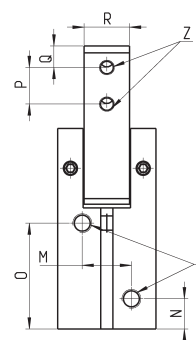
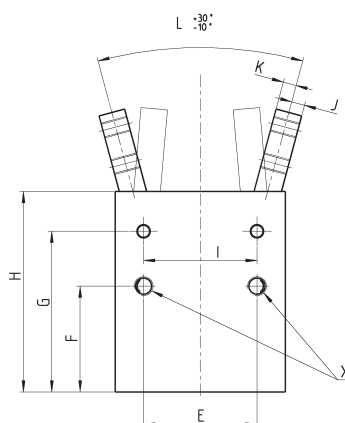
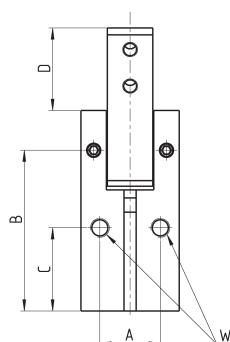
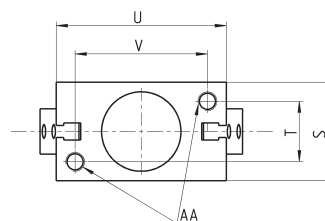


L = Length of gripping point
F = Gripping force



L = Length of gripping point
F = Gripping force

Angular grippers Series CGA



Y = port connection
 Z = claw mounting-holes
 X,W,AA = Mounting holes

DIMENSIONS

Mod.	A	B	C	D	E	F	G	H	I	J	K	L	M	N	O	P	Q	R	S	T	U	V
CGA-10	10	30,5	15,5	15,7	18	20	30,5	36,5	14	2,5	1,5	0°	10	7,5	19	6	3	7	16	10	23	17
CGA-16	14	38	21	17,5	24	25,5	38	45,5	24	3	3	0°	12	7,5	25,5	8	3	9	22	14	34	26
CGA-20	16	42,5	22	22	30	28	42,5	53	30	3,5	3,5	0°	13	8	28	10	4	12	26	16	45	35
CGA-25	20	48,5	24,5	26	36	31,5	48,5	61	36	4,5	4,5	0°	18	9	31	12	5	14	32	20	52	40
CGA-32	26	54	30	30	44	37,5	45	68	42	5	5	0°	24	10	33,5	14	6	18	40	26	60	46

DIMENSIONS

Mod.	X thread	X depth	Y thread	Y depth	W thread	W depth	Z thread	Z depth	AA thread	AA depth
CGA-10	M3	7	M3	-	M3	-	M3	-	M3	5
CGA-16	M4	11	M5	-	M4	-	M3	-	M4	7
CGA-20	M5	13	M5	-	M5	-	M4	-	M5	8
CGA-25	M6	15	M5	-	M6	-	M5	-	M6	10
CGA-32	M6	20	M5	-	M6	-	M6	-	M6	10