

# Series N pressure regulators

Ports G1/8, G1/4



Series N pressure regulators are available with G1/4 and G1/8 ports. Their design incorporates a self relieving diaphragm so as to allow decremental adjustments.

## GENERAL DATA

<b>Construction</b>	diaphragm type
<b>Materials</b>	brass, technopolymer, NBR
<b>Ports</b>	G1/8 - G1/4
<b>Weight</b>	Kg 0.316
<b>Pressure gauge ports</b>	G1/8
<b>Mounting</b>	in - line or console (in any position)
<b>Operating temperature</b>	-5°C ÷ 50°C (with the dew point of the fluid lower than 2°C at the min. working temperature)
<b>Inlet pressure</b>	0 ÷ 16 bar
<b>Outlet pressure</b>	0.5 ÷ 10 bar
<b>Nominal flow</b>	see graphs
<b>Secondary pressure relieving</b>	standard

**CODING EXAMPLE**

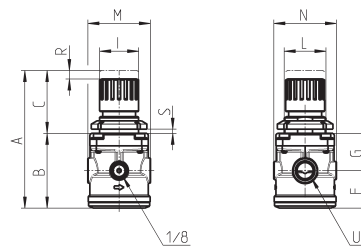
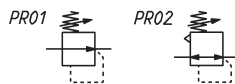
<b>N</b>	<b>12</b>	<b>04</b>	<b>-</b>	<b>R</b>	<b>0</b>	<b>0</b>
----------	-----------	-----------	----------	----------	----------	----------

<b>N</b>	SERIES
<b>12</b>	SIZE: 12
<b>04</b>	PORTS: 08 = G1/8 04 = G1/4
<b>R</b>	R = REGULATOR
<b>0</b>	OPERATING PRESSURE: 0 = 0,5 ÷ 10 (standard) 1 = 0 ÷ 4 2 = 0 ÷ 2 7 = 0,5 ÷ 7
<b>0</b>	DESIGN TYPE: 0 = self-relieving 1 = non-relieving

**Pressure regulators Series N**  
Calibrated or blocked regulators on request

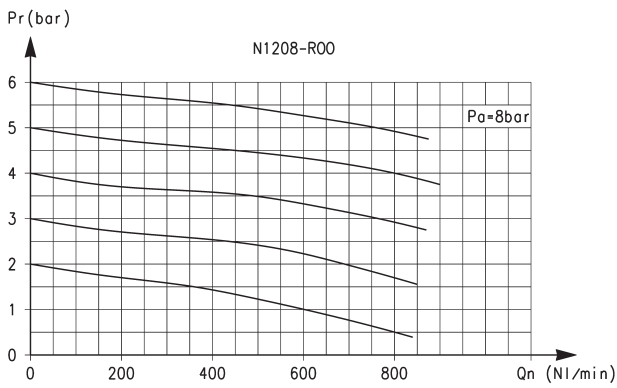


PR01 = regulator without relieving  
PR02 = regulator with relieving



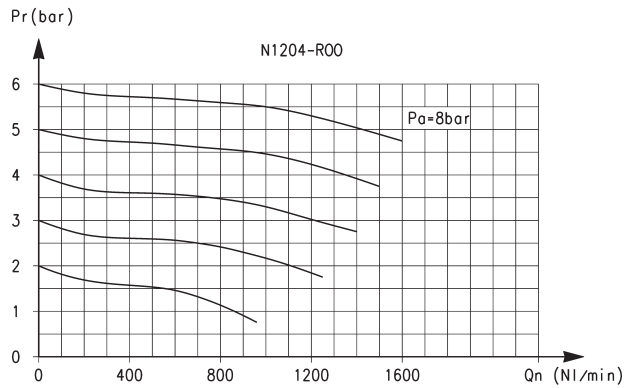
DIMENSIONS												
Mod.	A	B	C	F	G	I	L	M	N	R	S	U
<b>N1208-R00</b>	92	53	39	26	27	28	30X1,5	45	45	3	0+6	G1/8
<b>N1204-R00</b>	92	53	39	26	27	28	30X1,5	45	45	3	0+6	G1/4

FLOW DIAGRAMS



Flow diagram for model: N208-R00

Pa = Inlet pressure  
Pr = Regulated pressure  
Qn = Flow



Flow diagram for model: N204-R00

Pa = Inlet pressure  
Pr = Regulated pressure  
Qn = Flow