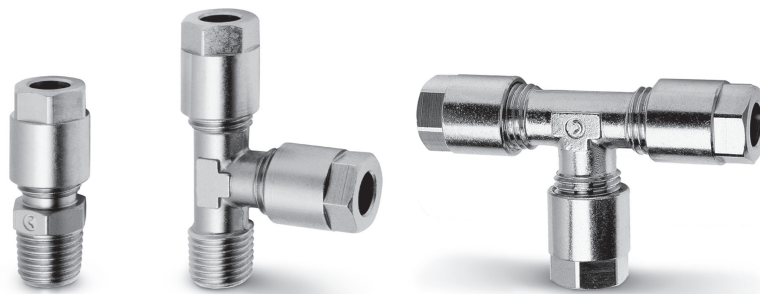


Series 1000 universal nose fittings

Nose fittings for plastic, copper and brass tubes: \varnothing 4, 6, 8, 10, 12 mm
 Fittings threads: BSP (G1/8, G1/4),
 BSPT (R1/8, R1/4, R3/8, R1/2)



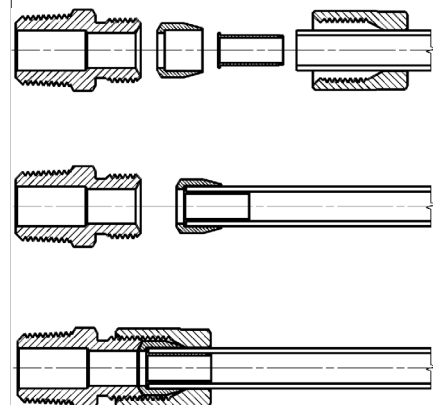
Series 1000 nose fittings are used with plastic tubes as well as with copper, brass, steel and aluminium tubes. These fittings, which are suitable for several applications, can be used within pneumatic, oil-pressure and low-pressure hydraulic circuits.

The fittings seats, noses and nuts comply with the DIN 3870-3861 standards.

GENERAL DATA

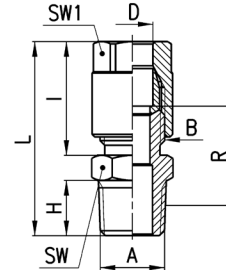
Material	nickel-plated brass
Threads	GAS, conical ISO 7 (BSPT) GAS, cylindrical ISO 228 (BSP)
Pressure	refer to operating pressure of tubes, max pressure 40 bar
Connecting tube	annealed copper and plastic tubes (with reinforcement)
Diameters	4 - 6 - 8 - 10 - 12 mm
Fluid	compressed air and other low pressure fluids
Temperature	see data for tubing used

Fittings with connecting tube



Fittings Mod. 1050

BSPT Male Connector

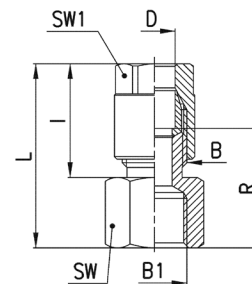


DIMENSIONS										
Mod.	D	A	B	H	I	L	R	SW	SW1	Weight (g)
1050 4-1/8	4	R1/8	1/8	7,5	19	31	14	12	12	19
1050 6-1/8	6	R1/8	1/8	7,5	19	31	14	12	12	18
1050 6-1/4	6	R1/4	1/8	11	19	35	16,5	14	12	23
1050 8-1/8	8	R1/8	1/4	7,5	23	35	15,5	14	14	29
1050 8-1/4	8	R1/4	1/4	11	23	39	18	14	14	33
1050 8-3/8	8	R3/8	1/4	11,5	23	39,5	18	17	14	40
1050 10-1/4	10	R1/4	3/8	11	25,5	41,5	18	17	17	51
1050 10-3/8	10	R3/8	3/8	11,5	25,5	42	18	17	17	55
1050 10-1/2	10	R1/2	3/8	14	25,5	45	18	22	17	65
1050 12-1/4	12	R1/4	M18x1,5	11	24,5	40,5	12	19	19	56 *
1050 12-3/8	12	R3/8	M18x1,5	11,5	24,5	41	12	19	19	58 *
1050 12-1/2	12	R1/2	M18x1,5	14	24,5	44	12	22	19	68 *

* = with bi-conical olive

Fittings Mod. 1063

BSP Female Connector

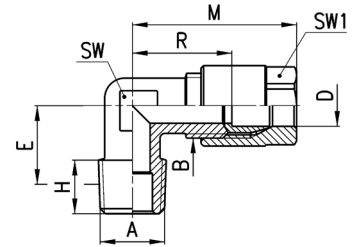


DIMENSIONS									
Mod.	D	B1	B	I	L	R	SW	SW1	Weight (g)
1063 4-1/8	4	G1/8	1/8	19	29	18,5	13	12	19
1063 6-1/8	6	G1/8	1/8	19	29	18,5	13	12	18
1063 6-1/4	6	G1/4	1/8	19	30,5	20	17	12	25
1063 8-1/8	8	G1/8	1/4	23	33	20	14	14	31
1063 8-1/4	8	G1/4	1/4	23	34,5	21,5	17	14	35

4/3.05.02

Fittings Mod. 1020

BSPT Fix Male Elbow

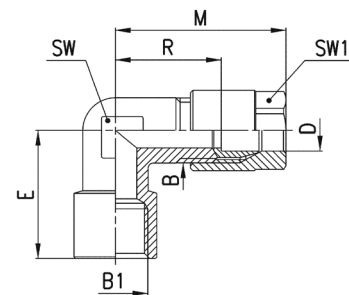


DIMENSIONS										
Mod.	D	A	B	E	H	M	R	SW	SW1	Weight (g)
1020 4-1/8	4	R1/8	1/8	11,5	7,5	29,5	19	9	12	21
1020 6-1/8	6	R1/8	1/8	11,5	7,5	29,5	19	9	12	19
1020 6-1/4	6	R1/4	1/8	13,5	11	29,5	19	12	12	27
1020 8-1/8	8	R1/8	1/4	11,5	7,5	33	20	11	14	35
1020 8-1/4	8	R1/4	1/4	13,5	11	33	20	12	14	36
1020 8-3/8	8	R3/8	1/4	15,5	11,5	35	22	14	14	50
1020 10-1/4	10	R1/4	3/8	15	11	38	22,5	13	17	59
1020 10-3/8	10	R3/8	3/8	15,5	11,5	38	22,5	14	17	58
1020 10-1/2	10	R1/2	3/8	16	14	38	22,5	16	17	78
1020 12-1/4	12	R1/4	M18x1,5	15	11	37	16,5	15	19	66 *
1020 12-3/8	12	R3/8	M18x1,5	15	11,5	37	16,5	15	19	66 *
1020 12-1/2	12	R1/2	M18x1,5	16	14	37	16,5	16	19	75 *

* = with bi-conical olive

Fittings Mod. 1093

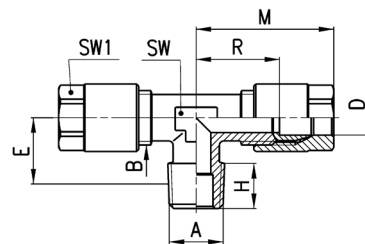
BSP Female Elbow



DIMENSIONS									
Mod.	D	B1	B	E	M	R	SW	SW1	Weight (g)
1093 4-1/8	4	G1/8	1/8	19	29,5	18,5	12	12	31
1093 6-1/8	6	G1/8	1/8	19	29,5	19	12	12	25
1093 6-1/4	6	G1/4	1/8	23	30,5	20	13	12	39
1093 8-1/8	8	G1/8	1/4	19	33	20	11	14	39
1093 8-1/4	8	G1/4	1/4	23	35	22	13	14	44

Fittings Mod. 1000

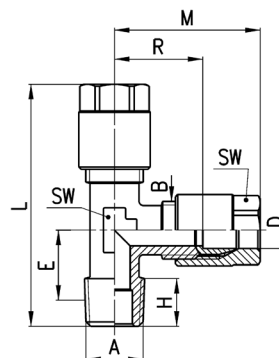
BSPT Fix Male Tee


DIMENSIONS

Mod.	D	A	B	E	H	M	R	SW	SW1	Weight (g)
1000 4-1/8	4	R1/8	1/8	11,5	7,5	29,5	19	9	12	35
1000 6-1/8	6	R1/8	1/8	11,5	7,5	29,5	19	9	12	33
1000 8-1/4	8	R1/4	1/4	13,5	11	33	20	12	14	63
1000 10-1/4	10	R1/4	3/8	15	11	38	22,5	13	17	104

Fittings Mod. 1010

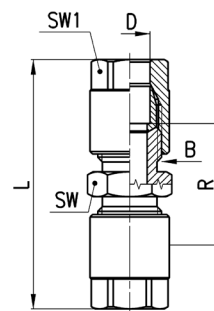
Lateral BSPT Fix Male Tee


DIMENSIONS

Mod.	D	A	B	E	H	L	M	R	SW	SW1	Weight (g)
1010 4-1/8	4	R1/8	1/8	11,5	7,5	48	29,5	19	9	12	37
1010 6-1/8	6	R1/8	1/8	11,5	7,5	48	29,5	19	9	12	33
1010 8-1/4	8	R1/4	1/4	13,5	11	54,5	33	20	12	14	61
1010 10-1/4	10	R1/4	3/8	15	11	61,5	38	22,5	13	17	103

Fittings Mod. 1230

Union Connector

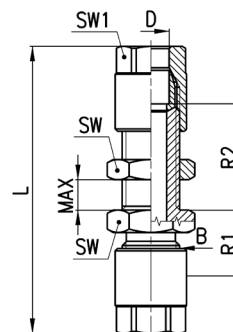

DIMENSIONS

Mod.	D	B	L	R	SW	SW1	Weight (g)
1230 4	4	1/8	42,5	21,5	12	12	29
1230 6	6	1/8	42,5	21,5	12	12	26
1230 8	8	1/4	51	25	14	14	48
1230 10	10	3/8	56	25	17	17	83
1230 12	12	M18x1,5	54	13	19	19	140 *

* = with bi-conical olive

Fittings Mod. 1250

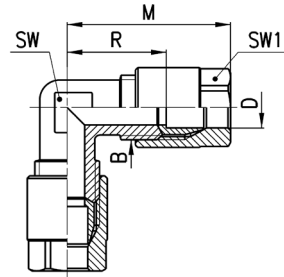
Bulkhead Connector


DIMENSIONS

Mod.	D	B	L	R1	R2	MAX	SW	SW1	Weight (g)
1250 4	4	1/8	57,5	12,5	23	12	14	12	40
1250 6	6	1/8	57,5	13	23,5	12	14	12	38
1250 8	8	1/4	65	15	24	13	17	14	67
1250 10	10	3/8	72,5	15	26,5	13	22	17	119

Fittings Mod. 1220

Elbow Connector



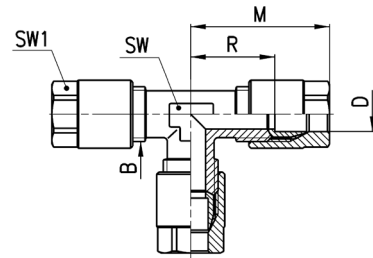
DIMENSIONS

Mod.	D	B	M	R	SW	SW1	Weight (g)
1220 4	4	1/8	29,5	19	9	12	31
1220 6	6	1/8	29,5	19	9	12	29
1220 8	8	1/4	33	20	11	14	53
1220 10	10	3/8	38	22,5	14	17	92
1220 12	12	M18x1,5	37	16,5	16	19	99 *

* = with bi-conical olive

Fittings Mod. 1210

Tee Connector



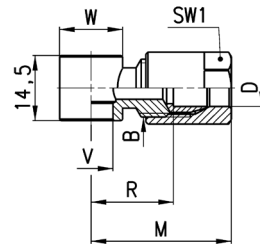
DIMENSIONS

Mod.	D	B	M	R	SW	SW1	Weight (g)
1210 4	4	1/8	29,5	19	9	12	45
1210 6	6	1/8	29,5	19	9	12	42
1210 8	8	1/4	33	20	12	14	79
1210 10	10	3/8	38	22,5	13	17	133
1210 12	12	M18x1,5	37	16,5	16	19	144 *

* = with bi-conical olive

Fittings Mod. 1170

Single Banjo

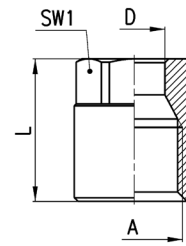


DIMENSIONS

Mod.	D	B	R	M	V	W	SW1	Weight (g)	assembled with Mod.
1170 6-1/8	6	1/8	17.5	28	9.8	∅ 14	12	20	1631, 1635, SCU, SVU, SCO...
1170 6-1/4	6	1/8	20	30.5	13.2	∅ 18	12	24	1631, 1635, SCU, SVU, SCO...
1170 8-1/8	8	1/4	18	31	9.8	∅ 14	14	31	1635, SCU, SVU, SCO...

Accessories Mod. 1303

Blocking nut


DIMENSIONS

Mod.	D	A	L	SW1	Weight (g)
1303 4-1/8	4	1/8	15,5	12	8
1303 6-1/8	6	1/8	15,5	12	8
1303 8-1/4	8	1/4	19	14	14
1303 10-3/8	10	3/8	21,5	17	24
1303 12-M18x1,5	12	M18x1,5	19,5	19	27

Accessories Mod. 1310

Olive and Bicone

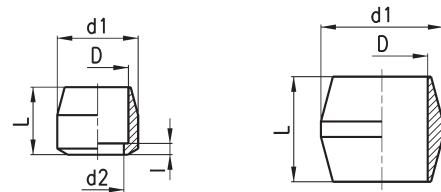


FIG. 1

FIG. 2

DIMENSIONS

Mod.	D	d1	d2	l	L	Weight (g)
1310 4	4	7,8	3	1	8	2
1310 6	6	7,8	4,5	1	7	1
1310 8	8	10,8	7	1,5	9	3
1310 10	10	13,8	9	1,5	11,5	5
1310 12-M18	12	16,3	12	-	11	6 *

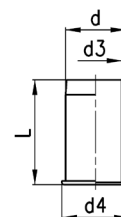
Fig. 1 = olive

Fig. 2 = bi-conical olive

* = with bi-conical olive

Accessories Mod. 1320

Inserts


DIMENSIONS

Mod.	d	d3	d4	L	Weight (g)
1320 4	4	3	5	12	1
1320 6	6	5	7	13	1
1320 8	8	7	9	14	1
1320 10	10	9	11	16	2