

Series 1000 rapid push-in fittings for plastic tubes

Tube external diameters: 5/3, 6/4, 8/6, 10/8, 12/10, 15/12,5 mm
 Fittings threads: metric (M5, M6, M12x1, M12x1,25),
 BSP (G1/8, G1/4, G3/8, G1/2), BSPT (R1/8, R1/4, R3/8, R1/2)



Series 1000 rapid push-in fittings can be easily installed.

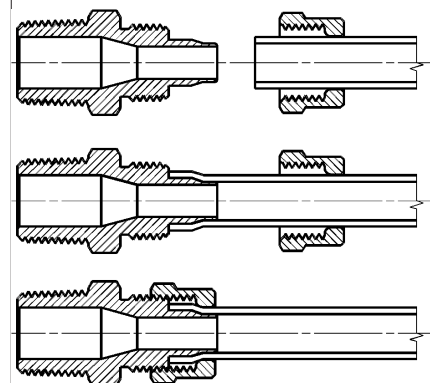
The push-in locking nuts can be tightened both manually and with a spanner even in case of stiff tubes like the PA or the Hytrel Polyester.

The special shape of the guiding cone ensures that the tube cannot be accidentally cut.

GENERAL DATA

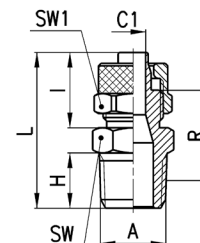
Materials	body and nut: nickel-plated brass O-ring: NBR thread seals: PTFE, PA, AL
Threads	GAS conical ISO 7 (BSPT) GAS cylindrical ISO 228 (BSP) M5 - M6 NPT and metric (available on request)
Pressure	the nominal pressure of the fittings is always higher than the pressure of the tube
Tube to connect	PA polyethylene braided PVC rilsan PU, Hytrel Polyester
Diameters	5/3 - 6/4 - 8/6 - 10/8 - 12/10 - 15/12,5 mm
Fluid	compressed air low pressure fluids
Temperature	-20°C + 80°C NOTE: for a better use of the fitting we recommend to check the tubing specifications.

Fitting with connecting tube



Fittings Mod. 1510

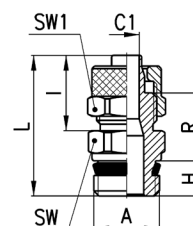
Metric-BSPT Male Connector


DIMENSIONS

Mod.	Tube	A	C1	H	I	L	R	SW	SW1	Weight (g)
1510 5/3-1/8	5/3	R1/8	2	7,5	12,5	24,5	14,5	12	8	10
1510 6/4-1/8	6/4	R1/8	3	7,5	15	27	16	12	12	15
1510 6/4-1/4	6/4	R1/4	3	11	15	31	18,5	14	12	19
1510 6/4-3/8	6/4	R3/8	3	11,5	15	31,5	18,5	17	12	22
1510 6/4-1/2	6/4	R1/2	3	14	15	34,5	20	22	12	38
1510 6/4-M12x1,25	6/4	M12X1,25	3	10	15	30	18	13	12	17
1510 8/6-1/8	8/6	R1/8	5	7,5	15	27	16	13	14	19
1510 8/6-1/4	8/6	R1/4	5	11	15	31	18,5	14	14	20
1510 8/6-3/8	8/6	R3/8	5	11,5	15	31,5	18,5	17	14	25
1510 8/6-1/2	8/6	R1/2	5	14	15	34,5	20	22	14	39
1510 10/8-1/8	10/8	R1/8	6,5	7,5	16,5	28,5	16,5	14	16	24
1510 10/8-1/4	10/8	R1/4	6,5	11	16,5	32,5	19	14	16	24
1510 10/8-3/8	10/8	R3/8	6,5	11,5	16,5	33	19	17	16	27
1510 10/8-1/2	10/8	R1/2	6,5	14	16,5	36	20,5	22	16	42
1510 12/10-3/8	12/10	R3/8	8,5	11,5	18	34,5	19	17	19	35
1510 12/10-1/2	12/10	R1/2	8,5	14	18	37,5	20,5	22	19	49
1510 15/12,5-1/2	15/12,5	R1/2	11	14	20	39,5	21	22	22	55

Fittings Mod. 1511

Metric Male Connector Sprint®

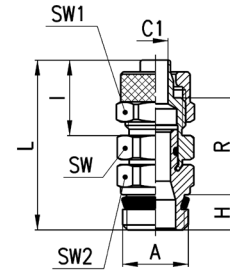

DIMENSIONS

Mod.	Tube	A	C1	H	I	L	R	SW	SW1	Weight (g)
1511 5/3-M5	5/3	M5	2	4	12,5	21	10,5	8	8	5 *
1511 5/3-M6	5/3	M6	2	4	12,5	21	10,5	9	8	5 *
1511 5/3-1/8	5/3	G1/8	2	5,5	12,5	23,8	11,8	12	8	10
1511 6/4-M5	6/4	M5	3	4	13,5	22	10,5	8	9	6 *
1511 6/4-M6	6/4	M6	3	4	13,5	22	10,5	9	9	7 *
1511 6/4-1/8	6/4	G1/8	3	5,5	15	26,3	13,3	12	12	15
1511 6/4-1/4	6/4	G1/4	3	7	15	28	13,5	14	12	16
1511 6/4-3/8	6/4	G3/8	3	8	15	29,3	13,8	19	12	27
1511 8/6-1/8	8/6	G1/8	5	5,5	15	26,3	13,3	12	14	17
1511 8/6-1/4	8/6	G1/4	5	7	15	28	13,5	14	14	18
1511 8/6-3/8	8/6	G3/8	5	8	15	29,3	13,8	19	14	27
1511 10/8-1/8	10/8	G1/8	6,5	5,5	16,5	27,8	13,8	14	16	23
1511 10/8-1/4	10/8	G1/4	6,5	7	16,5	29,5	14	14	16	25
1511 10/8-3/8	10/8	G3/8	6,5	8	16,5	30,8	14,3	19	16	30
1511 10/8-1/2	10/8	G1/2	6,5	9	16,5	32,5	15	22	16	36
1511 12/10-3/8	12/10	G3/8	8,5	8	18	32,3	14,3	19	19	39
1511 12/10-1/2	12/10	G1/2	8,5	9	18	34	15	22	19	42
1511 15/12,5-1/2	15/12,5	G1/2	11	9	20	36	15,5	22	22	52

* = with O-Ring

Fittings Mod. 1560

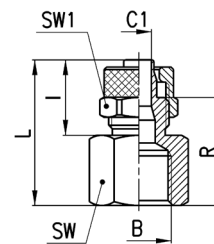
Swivel Male Connector Sprint®



DIMENSIONS											
Mod.	Tube	A	C1	H	I	L	R	SW	SW1	SW2	Weight (g)
1560 6/4-1/8	6/4	G1/8	3	5,5	15	31	18	12	12	12	19
1560 6/4-1/4	6/4	G1/4	3	7	15	32,5	18	12	12	14	25
1560 8/6-1/8	8/6	G1/8	5	5,5	15	32	19	13	14	12	21
1560 8/6-1/4	8/6	G1/4	5	7	15	33,5	19	13	14	14	26
1560 10/8-1/4	10/8	G1/4	6,5	7	16,5	34,5	19	14	16	14	27
1560 10/8-3/8	10/8	G3/8	6,5	8	16,5	36	19,5	14	16	19	38
1560 12/10-3/8	12/10	G3/8	6,5	8	18	38	20	17	19	19	46

Fittings Mod. 1463

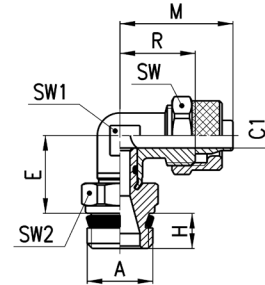
BSP Female Connector



DIMENSIONS									
Mod.	Tube	B	C1	I	L	R	SW	SW1	Weight (g)
1463 5/3-1/8	5/3	G1/8	2	12,5	22,5	16	13	8	10
1463 6/4-1/8	6/4	G1/8	3	15	25	17,5	13	12	14
1463 6/4-1/4	6/4	G1/4	3	15	26,5	19	17	12	21
1463 6/4-3/8	6/4	G3/8	3	15	27,5	20	20	12	25
1463 8/6-1/8	8/6	G1/8	5	15	25	17,5	13	14	16
1463 8/6-1/4	8/6	G1/4	5	15	26,5	19	17	14	22
1463 8/6-3/8	8/6	G3/8	5	15	27,5	20	20	14	26
1463 10/8-1/8	10/8	G1/8	6,5	16,5	21,5	13	14	16	19
1463 10/8-1/4	10/8	G1/4	6,5	16,5	28	19,5	17	16	28
1463 10/8-3/8	10/8	G3/8	6,5	16,5	29	20,5	20	16	31
1463 10/8-1/2	10/8	G1/2	6,5	16,5	33	24,5	24	16	43
1463 12/10-3/8	12/10	G3/8	8,5	18	30,5	20,5	20	19	37

Fittings Mod. 1541

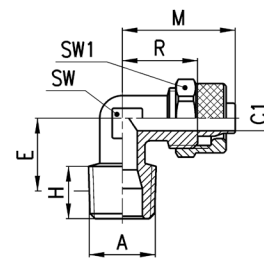
Swivel Male Elbow Sprint®


DIMENSIONS

Mod.	Tube	A	C1	E	H	M	R	SW	SW1	SW2	Weight (g)
1541 6/4-1/8	6/4	G1/8	3	15	5,5	22,5	15	12	10	12	22
1541 6/4-1/4	6/4	G1/4	3	15	7	22,5	15	12	10	14	27
1541 8/6-1/8	8/6	G1/8	5	15	5,5	22,5	15	14	10	12	23
1541 8/6-1/4	8/6	G1/4	5	15	7	22,5	15	14	10	14	28
1541 10/8-1/4	10/8	G1/4	6,5	16	7	25,5	17	16	12	14	35

Fittings Mod. 1500

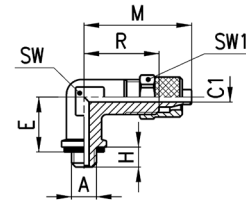
Fix Metric-BSPT Male Elbow


DIMENSIONS

Mod.	Tube	A	C1	E	H	M	R	SW	SW1	Weight (g)
1500 5/3-1/8	5/3	R1/8	2	13	7,5	21,5	15	8	8	11
1500 6/4-1/8	6/4	R1/8	3	13	7,5	22,5	15	8	12	15
1500 6/4-1/4	6/4	R1/4	3	15,5	11	22,5	15	10	12	21
1500 6/4-3/8	6/4	R3/8	3	17	11,5	23,5	16	12	12	27
1500 6/4-M12x1,25	6/4	M12x1,25	3	14	10	22,5	15	10	12	18
1500 8/6-1/8	8/6	R1/8	5	13	7,5	22,5	15	10	14	19
1500 8/6-1/4	8/6	R1/4	5	15,5	11	22,5	15	10	14	21
1500 8/6-3/8	8/6	R3/8	5	17	11,5	24	16	12	14	29
1500 8/6-1/2	8/6	R1/2	5	21,5	14	27	19	16	14	48
1500 10/8-1/8	10/8	R1/8	6,5	15	7,5	25,5	17	12	16	29
1500 10/8-1/4	10/8	R1/4	6,5	17	11	25,5	17	12	16	29
1500 10/8-3/8	10/8	R3/8	6,5	16,5	11,5	25,5	17	12	16	33
1500 10/8-1/2	10/8	R1/2	6,5	21	14	28,5	20	16	16	58
1500 12/10-3/8	12/10	R3/8	8,5	19	11,5	30	20	14	19	44
1500 12/10-1/2	12/10	R1/2	8,5	21	14	30,5	20,5	16	19	59
1500 15/12,5-1/2	15/12,5	R1/2	11	21	14	34	22,5	16	22	67

Fittings Mod. 1501 5/3-M5

Metric Fix Male Elbow

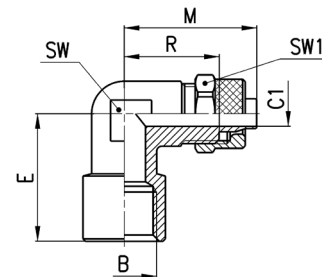


DIMENSIONS

Mod.	Tube	A	C1	E	H	M	R	SW	SW1	Weight (g)
1501 5/3-M5	5/3	M5	2	11	4	21,5	15	8	8	10

Fittings Mod. 1493

BSP Female Elbow

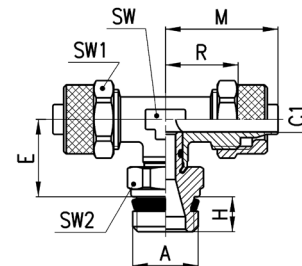


DIMENSIONS

Mod.	Tube	B	C1	E	M	R	SW	SW1	Weight (g)
1493 6/4-1/8	6/4	G1/8	3	19	22,5	15	10	12	20
1493 6/4-1/4	6/4	G1/4	3	23,5	26	18,5	14	12	34
1493 8/6-1/8	8/6	G1/8	5	19	22,5	15	10	14	21
1493 8/6-1/4	8/6	G1/4	5	23,5	26	19	14	14	34
1493 10/8-1/4	10/8	G1/4	6,5	23,5	27,5	18	14	16	39
1493 12/10-3/8	12/10	G3/8	8,5	24,5	30,5	20,5	16	19	53

Fittings Mod. 1431

Swivel Male Tee Sprint®

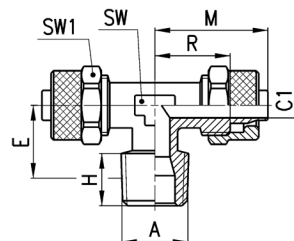


DIMENSIONS

Mod.	Tube	A	C1	E	H	M	R	SW	SW1	SW2	Weight (g)
1431 6/4-1/8	6/4	G1/8	3	15	5,5	22,5	15	10	12	12	32
1431 6/4-1/4	6/4	G1/4	3	15	7	22,5	15	10	12	14	38
1431 8/6-1/8	8/6	G1/8	5	15	5,5	22,5	15	10	14	12	36
1431 8/6-1/4	8/6	G1/4	5	15	7	22,5	15	10	14	14	41
1431 10/8-1/4	10/8	G1/4	6,5	16	7	25,5	17	12	16	14	54

Fittings Mod. 1410

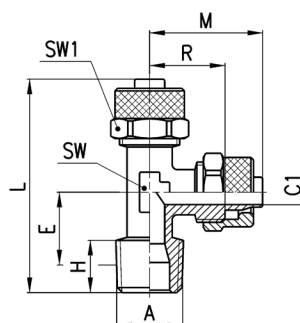
BSPT Fix Male Tee


DIMENSIONS

Mod.	Tube	A	C1	E	H	M	R	SW	SW1	Weight (g)
1410 5/3-1/8	5/3	R1/8	2	12,5	7,5	21,5	15	8	8	16
1410 6/4-1/8	6/4	R1/8	3	12,5	7,5	22,5	15	8	12	25
1410 6/4-1/4	6/4	R1/4	3	15,5	11	22,5	15	10	12	32
1410 8/6-1/8	8/6	R1/8	5	13	7,5	22,5	15	10	14	31
1410 8/6-1/4	8/6	R1/4	5	15,5	11	22,5	15	10	14	35
1410 10/8-1/8	10/8	R1/8	6,5	15	7,5	25,5	17	12	16	47
1410 10/8-1/4	10/8	R1/4	6,5	17	11	25,5	17	12	16	50
1410 10/8-1/2	10/8	R1/2	6,5	21,5	14	28,5	20	16	16	80
1410 12/10-3/8	12/10	R3/8	8,5	19	11,5	30	20	14	19	77
1410 12/10-1/2	12/10	R1/2	8,5	21,5	14	30,5	20,5	16	19	92
1410 15/12,5-1/2	15/12,5	R1/2	11	21,5	14	34	22,5	16	22	107

Fittings Mod. 1420

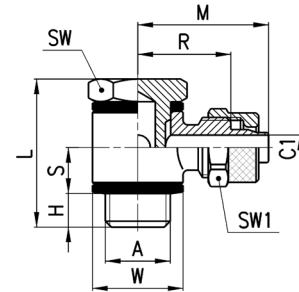
Lateral BSPT Male Tee


DIMENSIONS

Mod.	Tube	A	C1	E	H	L	M	R	SW	SW1	Weight (g)
1420 5/3-1/8	5/3	R1/8	2	12,5	7,5	37,5	21,5	15	8	8	15
1420 6/4-1/8	6/4	R1/8	3	12,5	7,5	38,5	22,5	15	8	12	23
1420 6/4-1/4	6/4	R1/4	3	15,5	11	43	22,5	15	10	12	29
1420 8/6-1/8	8/6	R1/8	5	13	7,5	39	22,5	15	10	14	31
1420 8/6-1/4	8/6	R1/4	5	15,5	11	43	22,5	15	10	14	34
1420 10/8-1/8	10/8	R1/8	6,5	15	7,5	43,5	25,5	17	12	16	46
1420 10/8-1/4	10/8	R1/4	6,5	17	11	47	25,5	17	12	16	50

Fittings Mod. 1521

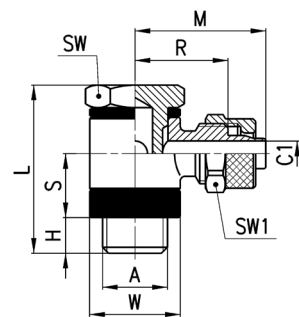
Complete Metric-BSP
Single Adjustable Banjo



DIMENSIONS												
Mod.	Tube	A	C1	H	L	S	M	R	W	SW	SW1	Weight (g)
1521 5/3-M5	5/3	M5	2	3	18	4,5	17	10,5	Ø 9	8	8	10
1521 5/3-1/8	5/3	G1/8	2	6	27	8,5	22,5	16	Ø 14	14	8	26
1521 6/4-M5	6/4	M5	3	3	18	4,5	18	10,5	Ø 9	8	9	11
1521 6/4-1/8	6/4	G1/8	3	6	27	8,5	24	16,5	Ø 14	14	12	31
1521 6/4-1/4	6/4	G1/4	3	8	29,5	8,5	26	18,5	Ø 18	17	12	48
1521 6/4-3/8	6/4	G3/8	3	8	30	8,5	28	20,5	Ø 21	19	12	57
1521 8/6-1/8	8/6	G1/8	5	6	27	8,5	24	16,5	Ø 14	14	14	34
1521 8/6-1/4	8/6	G1/4	5	8	29,5	8,5	26	18,5	Ø 18	17	14	46
1521 8/6-3/8	8/6	G3/8	5	8	30	8,5	28	20,5	Ø 21	19	14	64

Fittings Mod. 1525

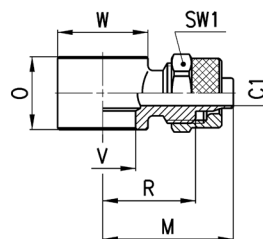
Complete Single
Adjustable Long Banjo



DIMENSIONS												
Mod.	Tube	A	C1	H	L	S	M	R	W	SW	SW1	Weight (g)
1525 6/4-1/8	6/4	G1/8	3	6	31	12,5	24	16,5	Ø14	14	12	35
1525 6/4-1/4	6/4	G1/4	3	8	33,5	12,5	26	18,5	Ø18	17	12	48
1525 6/4-3/8	6/4	G3/8	3	8	34	12,5	28	20,5	Ø21	19	12	60
1525 8/6-1/8	8/6	G1/8	5	6	31	12,5	24	16,5	Ø14	14	14	35
1525 8/6-1/4	8/6	G1/4	5	8	33,5	12,5	26	18,5	Ø18	17	14	54
1525 8/6-3/8	8/6	G3/8	5	8	34	12,5	28	20,5	Ø21	19	14	64
1525 10/8-1/8	10/8	G1/8	6,5	6	31	12,5	25	16,5	Ø14	14	16	38
1525 10/8-1/4	10/8	G1/4	6,5	8	33,5	12,5	27	18,5	Ø18	17	16	57
1525 10/8-3/8	10/8	G3/8	6,5	8	34	12,5	29,5	21	Ø21	19	16	69
1525 10/8-1/2	10/8	G1/2	6,5	9	35	12,5	32	23,5	Ø26	27	16	112
1525 12/10-3/8	12/10	G3/8	8	8	34	12,5	31,5	21,5	Ø21	19	19	77
1525 12/10-1/2	12/10	G1/2	8,5	9	35	12,5	33,5	23,5	Ø26	27	19	111
1525 15/12,5-1/2	15/12,5	G1/2	11	9	35	12,5	36,5	25	Ø26	27	22	120

Fittings Mod. 1610

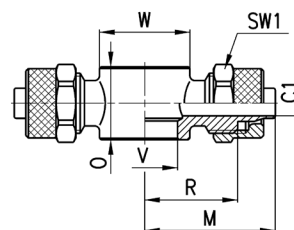
Single Banjo



DIMENSIONS										
Mod.	Tube	C1	M	O	R	V	W	SW1	Weight (g)	assembled with Mod.
1610 5/3-M5	5/3	2	17	9	10.5	5.1	∅ 9	8	8	1631, 1635
1610 5/3-M6	5/3	2	17	9	10.5	5.1	∅ 9	8	7	SCU, SVU, SCO...
1610 5/3-1/8	5/3	2	22.5	14.5	16	9.8	∅ 14	8	13	1631, 1635, SCU, SVU, SCO...
1610 6/4-M5	6/4	3	18	9	10.5	5.1	∅ 9	9	8	1631, 1635
1610 6/4-M6	6/4	2	18	9	10.5	5.1	∅ 9	9	8	SCU, SVU, SCO...
1610 6/4-1/8	6/4	3	24	14.5	16.5	9.8	∅ 14	12	18	1631, 1635, SCU, SVU, SCO...
1610 6/4-1/4	6/4	3	26	14.5	18.5	13.2	∅ 18	12	21	1631, 1635, SCU, SVU, SCO...
1610 6/4-3/8	6/4	3	28	14.5	20.5	16.7	∅ 21	12	22	1631, 1635, SCU, SVU, SCO...
1610 8/6-1/8	8/6	5	24	14.5	16.5	9.8	∅ 14	14	19	1631, 1635, SCU, SVU, SCO...
1610 8/6-1/4	8/6	5	26	14.5	18.5	13.2	∅ 18	14	22	1631, 1635, SCU, SVU, SCO...
1610 8/6-3/8	8/6	5	28	14.5	20.5	16.7	∅ 21	14	25	1631, 1635, SCU, SVU, SCO...
1610 10/8-1/8	10/8	6.5	25	14.5	16.5	9.8	∅ 14	16	25	1635, SCU, SVU, SCO...
1610 10/8-1/4	10/8	6.5	27	14.5	18.5	13.2	∅ 18	16	24	1635, SCU, SVU, SCO...
1610 10/8-3/8	10/8	6.5	29.5	14.5	21	16.7	∅ 21	16	28	1635, SCU, SVU, SCO...
1610 10/8-1/2	10/8	6.5	32	14.5	23.5	21	∅ 26	16	35	1635
1610 12/10-3/8	12/10	8	31.5	14.5	21.5	16.7	∅ 21	19	36	1635, SCU, SVU, SCO...
1610 12/10-1/2	12/10	8.5	33.5	14.5	23.5	21	∅ 26	19	40	1635
1610 15/12,5-1/2	15/12,5	11	36.5	14.5	25	21	∅ 26	22	48	1635

Fittings Mod. 1620

Double Banjo



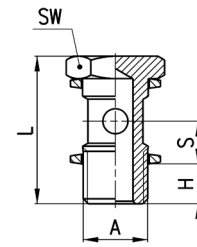
DIMENSIONS										
Mod.	Tube	C1	M	O	R	V	W	SW1	Weight (g)	assembled with Mod.
1620 6/4-M5	6/4	3	18	9	10.5	5.1	∅ 9	9	12	1631, 1635
1620 6/4-1/8	6/4	3	24	14.5	16.5	9.8	∅ 14	12	29	1631, 1635, SCU, SVU, SCO...
1620 6/4-1/4	6/4	3	26	14.5	18.5	13.2	∅ 18	12	31	1631, 1635, SCU, SVU, SCO...
1620 8/6-1/8	8/6	5	24	14.5	16.5	9.8	∅ 14	14	31	1631, 1635, SCU, SVU, SCO...
1620 8/6-1/4	8/6	5	26	14.5	18.5	13.2	∅ 18	14	34	1631, 1635, SCU, SVU, SCO...

Fittings Mod. 1631 01

Single Banjo Stem



Assembled with adjustable fittings Mod. 6610; 6620; 1610; 1620; 2023; 1170



DIMENSIONS						
Mod.	A	H	L	S	SW	Weight (g)
1631 01-M5	M5	4	18	5,5	8	3 *
1631 01-1/8	G1/8	6	27	8,5	14	13
1631 01-1/4	G1/4	8	29,5	8,5	17	24
1631 01-3/8	G3/8	8	30	8,5	19	35
1631 01-1/2	G1/2	9	31	8,5	27	63

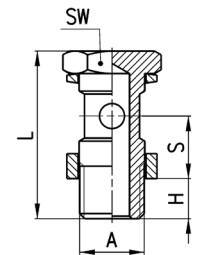
* = zinc-plated steel

Fittings Mod. 1635 01

Single Long Banjo Stem



Assembled with adjustable fittings Mod. 6610; 6620; 1610; 1620; 2023; 1170



DIMENSIONS						
Mod.	A	H	L	S	SW	Weight (g)
1635 01-1/8	G1/8	6	31	12,5	14	15
1635 01-1/4	G1/4	8	33,5	12,5	17	27
1635 01-3/8	G3/8	8	34	12,5	19	37
1635 01-1/2	G1/2	9	35	12,5	27	71
1635 01-M12x1,25	M12x1,25	8	33,5	12,5	17	27 *
1635 01-M12x1,5	M12x1,5	8	33,5	12,5	17	27 *

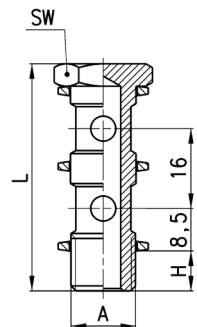
* = models that can be assembled with 1/4 banjo fittings

Fittings Mod. 1631 02

Double Banjo Stem



Assembled with adjustable fittings Mod. 6610; 6620; 1610; 1620; 2023; 1170

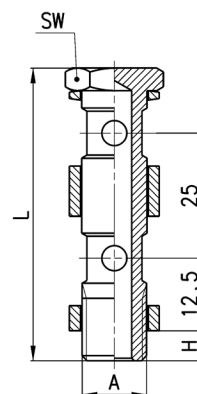


DIMENSIONS					
Mod.	A	H	L	SW	Weight (g)
1631 02-1/8	G1/8	6	43	14	18
1631 02-1/4	G1/4	8	45,5	17	33
1631 02-3/8	G3/8	8	46	19	48


Fittings Mod. 1635 02

Double Long Banjo Stem

Assembled with adjustable fittings Mod. 6610; 6620; 1610; 1620; 2023; 1170

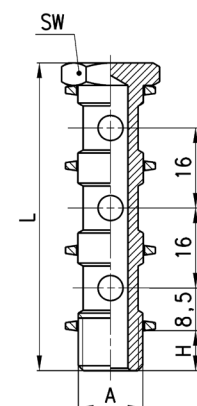

DIMENSIONS

Mod.	A	H	L	SW	Weight (g)
1635 02-1/8	G1/8	6	56	14	26
1635 02-1/4	G1/4	8	58,5	17	33
1635 02-3/8	G3/8	8	59	19	64
1635 02-1/2	G1/2	9	60	27	111


Fittings Mod. 1631 03

Triple Banjo Stem

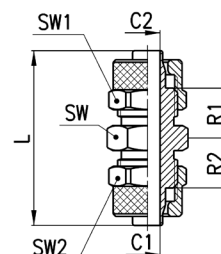
Assembled with adjustable fittings Mod. 6610; 6620; 1610; 1620; 2023; 1170


DIMENSIONS

Mod.	A	H	L	SW	Weight (g)
1631 03-1/8	G1/8	6	59	14	24
1631 03-1/4	G1/4	8	61,5	17	42
1631 03-3/8	G3/8	8	62	19	62

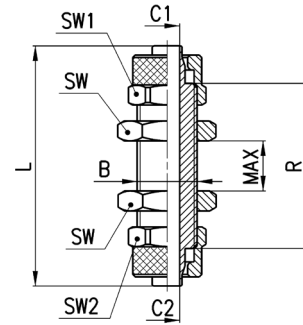

Fittings Mod. 1580

Union Connector


DIMENSIONS

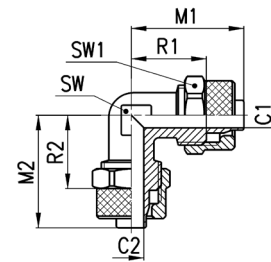
Mod.	Tube	C1	C2	L	R1	R2	SW	SW1	SW2	Weight (g)
1580 5/3	5/3	2	2	28,5	7,5	7,5	8	8	8	8
1580 6/4	6/4	3	3	34,5	10	10	12	12	12	22
1580 8/6	8/6	5	5	34,5	9,75	9,75	13	14	14	28
1580 10/8	10/8	6,5	6,5	38	10,5	10,5	14	16	16	38
1580 12/10	12/10	8,5	8,5	41	10,5	10,5	17	19	19	55
1580 15/12,5	15/12,5	11	11	45	11	11	22	22	22	80
1580 8/6-6/4	8/6-6/4	5	3	34,5	9,75	9,75	13	12	14	24
1580 10/8-6/4	10/8-6/4	6,5	3	36,5	10,5	10	14	12	16	31

Fittings Mod. 1590
Bulkhead Union Reducer



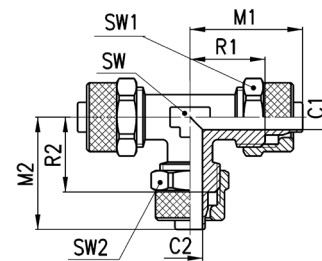
DIMENSIONS											
Mod.	Tube	B	C1	C2	L	R	MAX	SW	SW1	SW2	Weight (g)
1590 5/3	5/3	M7x0,75	2	2	40	27	9	8	8	8	12
1590 6/4	6/4	M10x1	3	3	48	33	14	14	12	12	33
1590 8/6	8/6	M12x1	5	5	48	33	12	17	14	14	43
1590 10/8	10/8	M14x1	6,5	6,5	48	31	10	17	16	16	52
1590 12/10	12/10	M16x1	8,5	8,5	53	33	10	19	19	19	71
1590 6/4-5/3	6/4-5/3	M10x1	3	2	48	34	14	14	12	12	33
1590 8/6-6/4	8/6-6/4	M12x1	5	3	48	33	12	17	14	14	44

Fittings Mod. 1550
Elbow Connector



DIMENSIONS										
Mod.	Tube	C1	C2	M1	M2	R1	R2	SW	SW1	Weight (g)
1550 6/4	6/4	3	3	22,5	22,5	15	15	8	12	21
1550 8/6	8/6	5	5	22,5	22,5	15	15	10	14	27
1550 10/8	10/8	6,5	6,5	25,5	25,5	17	17	12	16	40
1550 12/10	12/10	8,5	8,5	30	30	20	20	14	19	61
1550 15/12,5	15/12,5	11	11	34	34	22,5	22,5	16	22	88

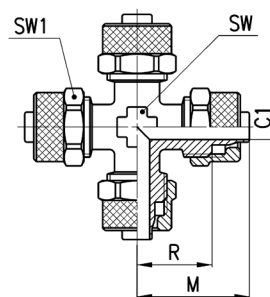
Fittings Mod. 1540
Tee Connector



DIMENSIONS											
Mod.	Tube	C1	C2	M1	M2	R1	R2	SW	SW1	SW2	Weight (g)
1540 5/3	5/3	2	2	21,5	21,5	15	15	8	8	8	17
1540 6/4	6/4	3	3	22,5	22,5	15	15	8	12	12	31
1540 8/6	8/6	5	5	22,5	22,5	15	15	10	14	14	39
1540 10/8	10/8	6,5	6,5	25,5	25,5	17	17	12	16	16	58
1540 12/10	12/10	8,5	8,5	30	30	20	20	14	19	19	90
1540 15/12,5	15/12,5	11	11	34	34	22,5	22,5	16	22	22	128
1540 8/6-6/4	8/6-6/4	5	3	22,5	22,5	15	15	10	14	12	38
1540 10/8-6/4	10/8-6/4	6,5	3	25,5	23,5	17	16,5	12	16	12	50
1540 10/8-8/6	10/8-8/6	6,5	5	25,5	24	17	16,5	12	16	14	53

Fittings Mod. 1600

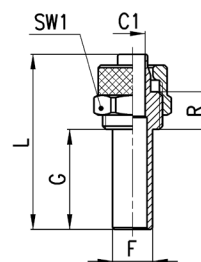
Cross Connector


DIMENSIONS

Mod.	Tube	C1	M	R	SW	SW1	Weight (g)
1600 6/4	6/4	3	22,5	15	8	12	41
1600 8/6	8/6	5	22,5	15	10	14	52

Fittings Mod. 1470

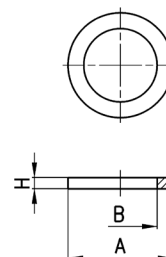
Adaptor with Junction


DIMENSIONS

Mod.	Tube	F	C1	G	L	R	SW1	Weight (g)
1470 6/4	6/4	6	3	20	35	7,5	12	11
1470 8/6	8/6	8	5	20	35	7,5	14	15

Accessories Mod. 2651

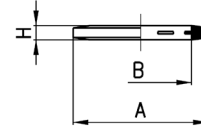
Aluminium Washer


DIMENSIONS

Mod.	A	B	H	Weight (g)
2651 1/8	14	9,8	1,5	1
2651 1/4	18	13,2	1,5	1
2651 3/8	22	16,7	1,5	1
2651 1/2	26	20,9	1,5	1
2651 1	38,5	33,4	1,5	2

Accessories Mod. 2661

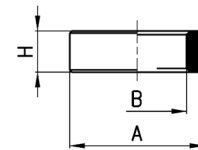
Plastic Washer



DIMENSIONS				
Mod.	A	B	H	Weight (g)
2661 M3	4,9	2,8	0,7	1
2661 M5	8	5,2	1	1
2661 M6	9	6,2	1	1
2661 1/8	14	10,2	1,9	1
2661 1/4	18	13,5	1,9	1
2661 3/8	21	16,5	2,1	1
2661 1/2	26	21,2	1,9	1

Accessories Mod. 2665

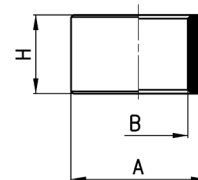
Plastic Washer



DIMENSIONS				
Mod.	A	B	H	Weight (g)
2665 1/8	14	9,8	5	1
2665 1/4	18	13,2	5	1
2665 3/8	21	16,8	5	1
2665 1/2	26	21,1	5	1

Accessories Mod. 2669

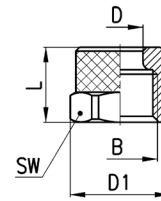
Plastic Washer



DIMENSIONS				
Mod.	A	B	H	Weight (g)
2669 1/8	14	9,8	10	1
2669 1/4	18	13,2	10	2
2669 3/8	21	16,8	10	2
2669 1/2	26	21,1	10	2

Accessories Mod. 1703

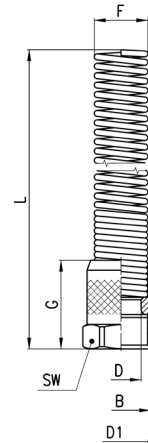
Blocking nut


DIMENSIONS

Mod.	Tube	B	D	D1	L	SW1	Weight (g)
1703 5/3-M7x0,75	5/3	M7x0,75	5,1	8,8	8,5	8	1
1703 6/4-M8x0,75	6/4	M8x0,75	6,1	9,8	8,5	9	2
1703 6/4-M10x1	6/4	M10x1	6,1	13,3	10	12	4
1703 8/6-M12x1	8/6	M12x1	8,2	15,5	10	14	5
1703 10/8-M14x1	10/8	M14x1	10,15	17,5	13	16	8
1703 12/10-M16x1	12/10	M16x1	12,2	21	13,5	19	12
1703 15/12,5-M20x1	15/12,5	M20x1	15,2	24,5	16	22	15

Accessories Mod. 1723

Blocking nut with metal spring


DIMENSIONS

Mod.	Tube	B	F	D	D1	G	L	SW	Weight (g)
1723 6/4-M10x1	6/4	M10x1	8,9	6,1	13,3	18	90,5	12	15
1723 8/6-M12x1	8/6	M12x1	10,9	8,2	15,5	18	94,5	14	23
1723 10/8-M14x1	10/8	M14x1	12,5	10,15	17,5	22	96,5	16	29
1723 12/10-M16x1	12/10	M16x1	15,5	12,2	21	23,5	108	19	46
1723 15/12,5-M20x1	15/12,5	M20x1	18,5	15,2	24,5	28	120	22	57