

# Series NPF flexible suction pad mountings

The vulcanisation provides flexibility in all directions.  
Thread G1/4



- » Flexible in all directions for optimal adaption to the workpiece (up to 12°)
- » Low pivoting point which reduces the wear on the suction pad.
- » Rubber covered (vulcanised) metal connection for heavy loads.

**Series NPF flexible suction pad mounting allows a better adaption between the suction pad and the workpiece due to its flexibility in all directions.**

#### Applications:

- Suitable for use in conjunction with larger flat suction pads on bigger workpieces which are either inclined or have a tendency to sag during the lifting operation or simply have a slightly irregular shape.
- They can be used in combination with spring plungers for further compensation in height if needed.

## GENERAL DATA

<b>Description</b>	Flexible suction pad mounting
<b>Materials</b>	- Steel body - Vulcanised rubber connection

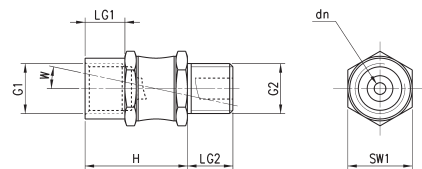
**CODING EXAMPLE**

NPF	-	FM	-	1/4	-	M10 X 1,25
-----	---	----	---	-----	---	------------

<b>NPF</b>	SERIES NPF = Flexible suction pad mountings
<b>FM</b>	THREAD VERSION FM = G1 Female / G2 Male
<b>1/4</b>	FEMALE THREAD G1 1/4 = G1/4
<b>M10x1,25</b>	MALE THREAD G2 M10x1,25 = M10x1,25 1/4 = G1/4

**Flexible suction pad mountings Series NPF**

- \* G1 = Female thread (F)
- \*\* G2 = Male thread (M)


**DIMENSIONS**

Mod.	dn	G1 *	G2 **	H	LG1	LG2	SW1	W(*)	Vertical load (N)	Bending moment (Nm)	Weight (g)
<b>NPF-FM-1/4-M10X1,25</b>	2,8	G1/4 F	M10X1,25 M	27	10,5	8	17	12	500	8	26
<b>NPF-FM-1/4-1/4</b>	3	G1/4 F	G1/4 M	27	12	12	17	12	750	10	30

5/3.05.02