

# Series MC pressure regulators

Ports G1/4, G3/8 and G1/2  
Modular



Series MC pressure regulators are available with ports G1/4, G3/8 and G1/2. Versions with secondary pressure relieving are usually available and all regulators can be panel mounted.

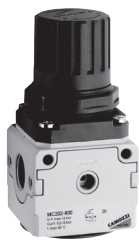
## GENERAL DATA

<b>Construction</b>	modular, compact, diaphragm type			
<b>Materials</b>	zama, brass, NBR, technopolymer			
<b>Ports</b>	G1/4	G3/8	G1/2	
<b>Weight</b>	kg	0,323	0,644	0,624
<b>Pressure gauge ports</b>	G1/8			
<b>Mounting</b>	in-line, wall or console mounting (in any position)			
<b>Operating temperature</b>	-5°C ÷ 50°C (with the dew point of the fluid lower than 2°C at the min. working temperature)			
<b>Finishing</b>	enamelled			
<b>Inlet pressure</b>	0 ÷ 16 bar			
<b>Outlet pressure</b>	0.5 ÷ 10 bar or 0 ÷ 4 bar			
<b>Nominal flow</b>	see graph			
<b>Secondary pressure relieving</b>	standard			

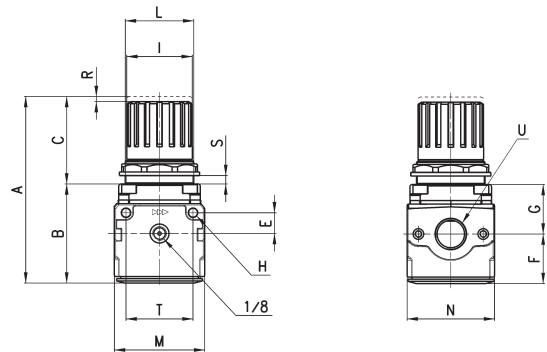
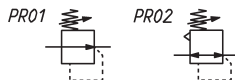
**CODING EXAMPLE**

<b>MC</b>	<b>2</b>	<b>02</b>	<b>-</b>	<b>R</b>	<b>0</b>	<b>0</b>
-----------	----------	-----------	----------	----------	----------	----------

<b>MC</b>	SERIES
<b>2</b>	SIZE: 1 = G1/4 2 = G3/8 - G1/2
<b>02</b>	PORTS 04 = G1/4 38 = G3/8 02 = G1/2
<b>R</b>	R = REGULATOR
<b>0</b>	OPERATING PRESSURE: 0 = 0,5 + 10 (standard) 1 = 0 + 4 2 = 0 + 2 (only G1/4) 7 = 0,5 + 7 (only G1/4)
<b>0</b>	DESIGN TYPE: 0 = self-relieving (standard) 1 = non-relieving 5 = precise relieving

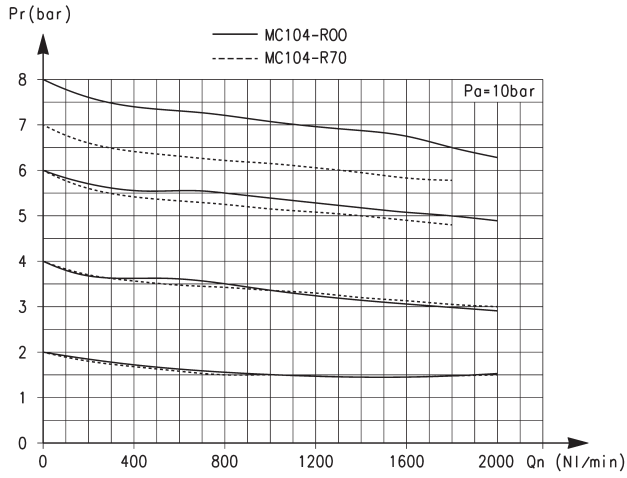
**Pressure regulators Series MC**


PR01 = regulator without relieving  
PR02 = regulator with relieving


**DIMENSIONS**

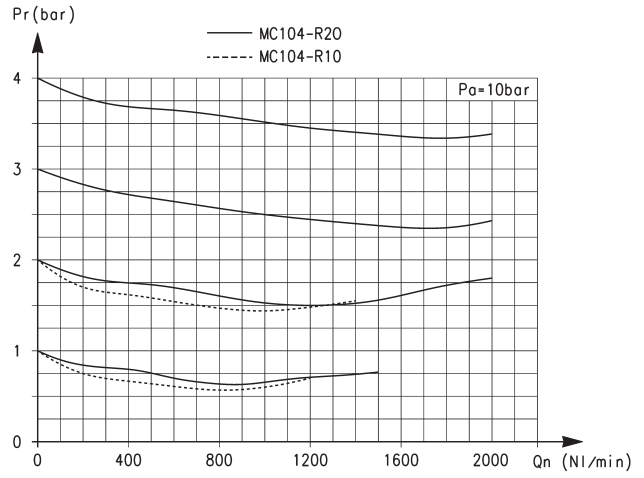
Mod.	A	B	C	E	F	G	H	I	L	M	N	R	S	T	U
<b>MC104-R00</b>	94	56	38	11	28,5	27,5	4,5	28	30X1,5	45	45	3	0+6	35	G1/4
<b>MC238-R00</b>	127	67	60	14	34	35	5,5	45	47X1,5	62	60	3,5	0+9	46	G3/8
<b>MC202-R00</b>	127	67	60	14	34	35	5,5	45	47X1,5	62	60	3,5	0+9	46	G1/2

FLOW DIAGRAMS



Flow diagrams for models: MC104-R00 and MC104-R70

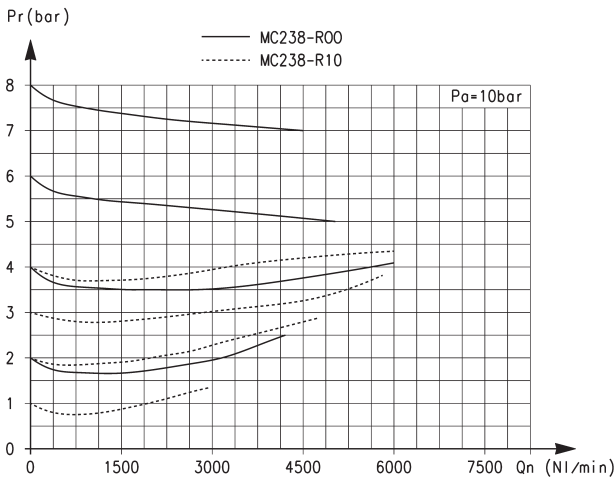
Pa = Inlet pressure  
Pr = Regulated pressure  
Qn = Flow



Flow diagrams for models: MC104-R10 and MC104-R20

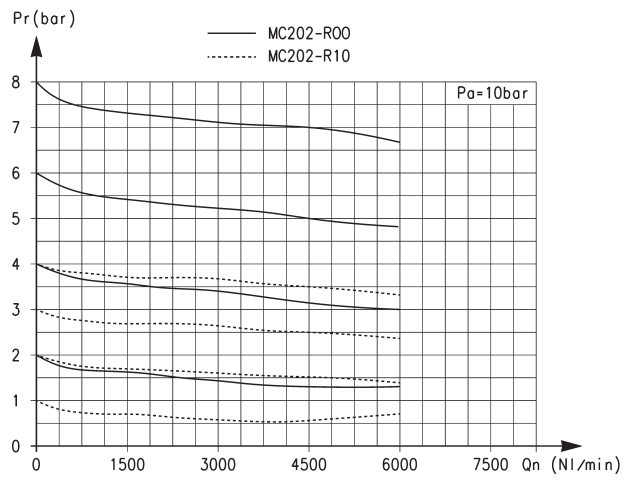
Pa = Inlet pressure  
Pr = Regulated pressure  
Qn = Flow

FLOW DIAGRAMS



Flow diagrams for models: MC238-R00 and MC238-R10

Pa = Inlet pressure  
Pr = Regulated pressure  
Qn = Flow



Flow diagrams for models: MC202-R00 and MC202-R10

Pa = Inlet pressure  
Pr = Regulated pressure  
Qn = Flow