

# Series FVT vacuum cup filters

Used as pre-filters and fine filters for air with varying amounts of contamination, for the protection of the vacuum generator.  
Mounted as protection for the ejector.



- » Wide range of sizes
- » Recycling filter cartridge
- » Replaceable filter element
- » Transparent filter cup to check the filter's conditions

These filters can be mounted directly under the ejectors to protect them in case of dusty environmental conditions. The filter element can be substituted very easily and its conditions can be checked thanks to its transparent wrapping.  
These filters can be wall-mounted through a proper bracket.  
Filtering of vacuum and air up to 7 bar.

## GENERAL DATA

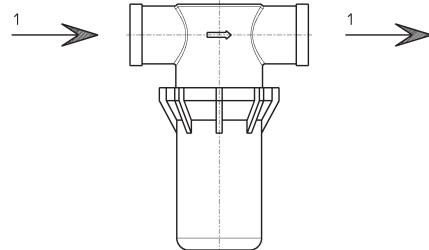
<b>Description</b>	Cup filter
<b>Materials</b>	- body in technopolymer - filter in polyethylene (PE)

**CODING EXAMPLE**

<b>FVT</b>	<b>-</b>	<b>FF</b>	<b>-</b>	<b>1/4</b>	<b>-</b>	<b>80</b>
------------	----------	-----------	----------	------------	----------	-----------

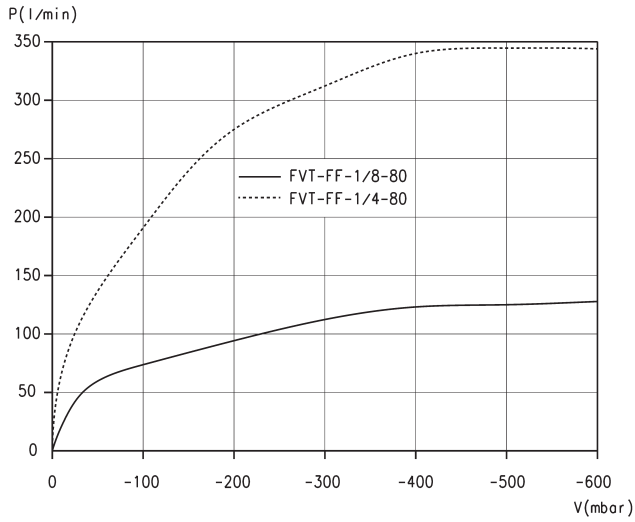
<b>FVT</b>	SERIES: FVT = cup filter
<b>FF</b>	THREAD SIZE: FF = female-female
<b>1/4</b>	CONNECTIONS: 1/8 = G1/8 1/4 = G1/4 3/8 = G3/8 1/2 = G1/2 3/4 = G3/4
<b>80</b>	FILTER ELEMENT: 80 = 80 µm

**TECHNICAL DATA**



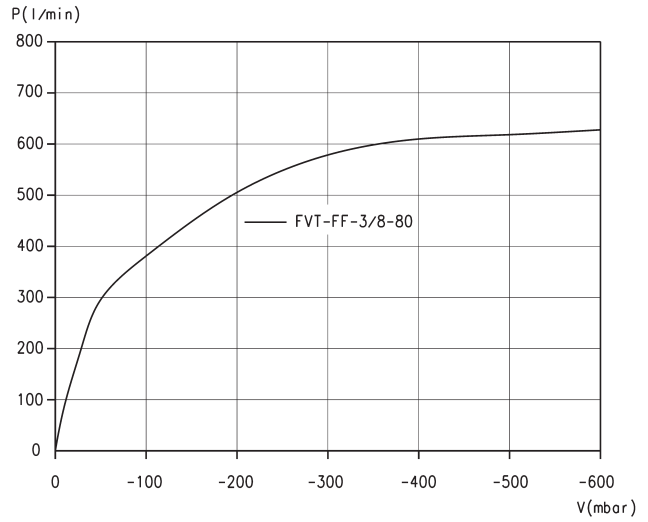
TECHNICAL DATA						
Mod.	Filter element (µm)	Nominal flow (l/min)	Max vacuum (mbar)	Max pressure at 25°C (bar)	Max pressure at 50°C (bar)	Weight (kg)
<b>FVT-FF-1/8-80</b>	80	45	-990	7	5	0,049
<b>FVT-FF-1/4-80</b>	80	110	-990	7	5	0,047
<b>FVT-FF-3/8-80</b>	80	245	-990	7	5	0,079
<b>FVT-FF-1/2-80</b>	80	300	-990	7	5	0,076
<b>FVT-FF-3/4-80</b>	80	600	-990	7	5	0,164

Diagrams FVT



LEGEND:  
P = Volumetric flow  
V = Vacuum values

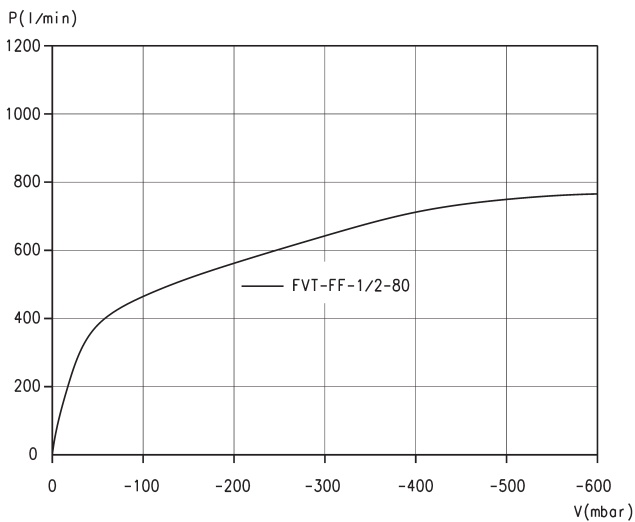
Note: Flow rate for different vacuum values



LEGEND:  
P = Volumetric flow  
V = Vacuum values

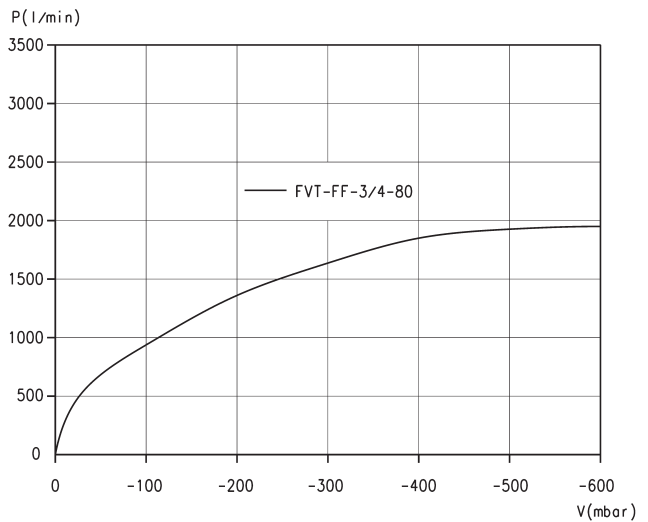
Note: Flow rate for different vacuum values

Diagrams FVT



LEGEND:  
P = Volumetric flow  
V = Vacuum values

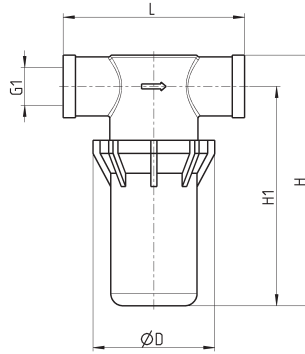
Note: Flow rate for different vacuum values



LEGEND:  
P = Volumetric flow  
V = Vacuum values

Note: Flow rate for different vacuum values

Cup filter - Series FVT

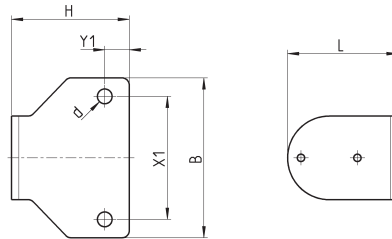


DIMENSIONS

Mod.	D	G1	H	H1	L
<b>FVT-FF-1/8-80</b>	48	G1/8-F	60	50	58
<b>FVT-FF-1/4-80</b>	48	G1/4-F	60	50	76
<b>FVT-FF-3/8-80</b>	48,5	G3/8-F	101	88	77,2
<b>FVT-FF-1/2-80</b>	48	G1/2-F	101	88	77,2
<b>FVT-FF-3/4-80</b>	75	G3/4-F	137	118	90,5

Mouting foot bracket

The mod. FVT-FF-1/8-80-B is used on cup filters with ports G1/8, G1/4, G3/8 e G1/2.  
 The mod. FVT-FF-3/4-80-B is used on cup filters with ports G3/4.



DIMENSIONS

Mod.	B	d	H	L	X1	Y1
<b>FVT-FF-1/8-80-B</b>	65	6	48	45	50	10
<b>FVT-FF-3/4-80-B</b>	85	6	52	70	70	10