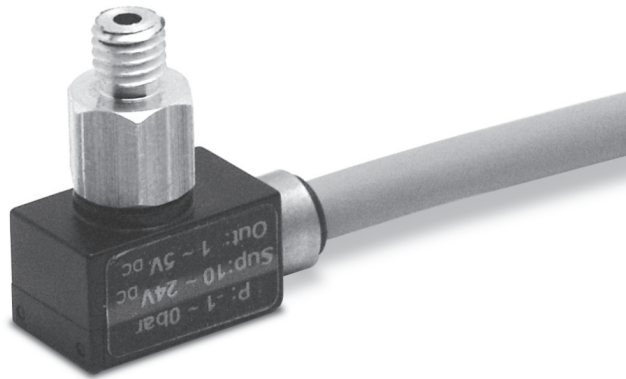


# Series SWM electronic miniature vacuum switches

These vacuum switches are used in measuring ranges between -1 and 0 bar.

2

CONTROL



- » Small dimension and reduced weight
- » Available with analog or digital output
- » High measuring accuracy
- » Possibility to connect with M5 thread or 6 mm plug-in tubes

#### Applications:

- Measurement of vacuum values close to the suction pad
- Electric output signal

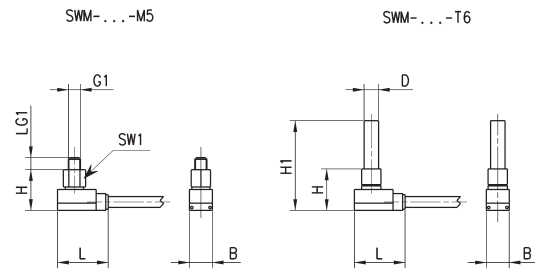
These vacuum switches can be mounted directly at the gripping point of a handling system, also when subject to high acceleration forces.

## GENERAL DATA

<b>Type of vacuum switch</b>	electronic, mini sensor and connection
<b>Connection</b>	- M5 thread - plug-in tubes
<b>Output signal</b>	analog or digital

CODING EXAMPLE					
SW	M	-	VA0	-	T6
<b>SW</b>	SERIES SW = transducer				
<b>M</b>	VERSION m = Micro				
<b>VA0</b>	OUTPUT SIGNAL VA0 = analog output VD6 = digital output with switching point set to -600 mbar				
<b>T 6</b>	CONNECTION T6 = with diam. 6 mm plung in tube M5 = male thread M5				

Vacuum switches Series SWM



DIMENSIONS								
Mod.	B	D	G1	H	H1	L	LG1	SW1
<b>SWM-VA0-M5</b>	9,5	-	M5	16,9	-	21	5	8
<b>SWM-VA0-T6</b>	9,5	6		17,2	37,2	21	-	-
<b>SWM-VD6-M5</b>	9,5	-	M5	16,9	-	21	5	8
<b>SWM-VD6-T6</b>	9,5	6		17,2	37,2	21	-	-

**TECHNICAL DATA**

Mod.	SWM-VA0-M5	SWM-VA0-T6	SWM-VD6-M5	SWM-VD6-T6
<b>Fluid</b>	Non-aggressive gas, dry air, without lubrication.	Non-aggressive gas, dry air, without lubrication.	Non-aggressive gas, dry air, without lubrication.	Non-aggressive gas, dry air, without lubrication.
<b>Work area</b>	-1 ÷ 0 bar	-1 ÷ 0 bar	-1 ÷ 0 bar	-1 ÷ 0 bar
<b>Max overpressure [bar]</b>	5	5	5	5
<b>Precision</b>	± 1% work area	± 1% work area	± 1% work area	± 1% work area
<b>Hysteresis</b>	-	-	Fixed: ca.20 mbar	Fixed: ca.20 mbar
<b>Output signal</b>	Analogic: 1...5 V	Analogic: 1...5 V	Digital	Digital
<b>Max output current [mA]</b>	-	-	60	60
<b>Switching point</b>	-	-	-600 mbar	-600 mbar
<b>Signalling</b>	-	-	LED	LED
<b>Electric connection</b>	Cable	Cable	Cable	Cable
<b>Voltage</b>	10-24V-DC	10-24V-DC	10-24V-DC	10-24V-DC
<b>IP Protection</b>	IP 40	IP 40	IP 40	IP 40
<b>Temperature effect</b>	± 3% measurement range	± 3% measurement range	± 3% measurement range	± 3% measurement range
<b>Operating temperature</b>	0°C + 50 °C	0°C + 50 °C	0°C + 50 °C	0°C + 50 °C
<b>Weight [g]</b>	75	75	75	75