

Series CGC

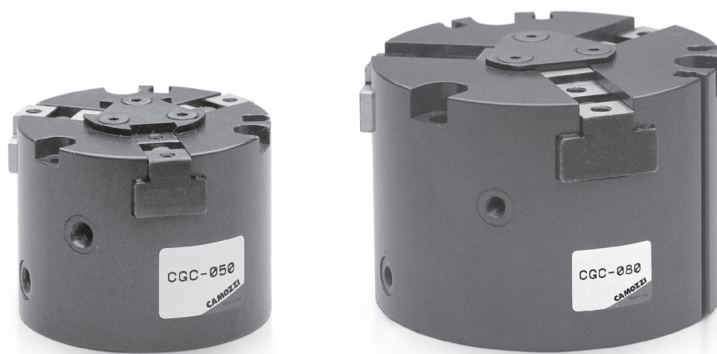
3-Finger centric grippers

1

MOVEMENT

Magnetic

Sizes 50 - 64 - 80 - 100 - 125



- » Compact design
- » High gripping force
- » Long stroke

The proximity switches can be inserted in the U-shaped grooves on the body in order to detect whether the gripper is in an open or closed position.

Series CGC 3-finger centric grippers are available in 5 different sizes. Significant for Series CGC is the compact design that allows the combination of a high gripping force and long stroke. The piston is equipped with permanent magnet for the use of magnetic proximity switches.

GENERAL DATA

Model	CGC-50; CGC-64; CGC-80; CGC-100; CGC-125
Bore sizes	Ø 32 Ø 45 Ø 58 Ø 77 Ø 98
Type of operation	double-acting
Materials	housing: high tensile special hard-coated aluminium alloy, Functional parts: hardened steel
Operating pressure (bar)	2 + 7 bar
Operating temperature	5°C + 60°C
Repeatability	+/- 0,05 mm
Max. operating frequency	60 cycles/min
Lubrication	lever section lubrication required on sliding section
Theoretical holding force (N) with gripping point at 30 mm with 5 bar opening	Ø 32 = 78, Ø 45 = 185 Ø 58 = 340, Ø 77 = 580 Ø 98 = 940
Theoretical holding force (N) with gripping point at 30 mm with 5 bar closing	Ø 32 = 68, Ø 45 = 160 Ø 58 = 290, Ø 77 = 510 Ø 98 = 860
Weight (g)	Ø 32 = 230, Ø 45 = 410 Ø 58 = 800, Ø 77 = 1400 Ø 98 = 2400
Stroke per finger (mm)	Ø 32 = 4, Ø 45 = 6 Ø 58 = 8, Ø 77 = 10 Ø 98 = 13
Port sizes	Ø 32- 45 -58 - M5 Ø 77 - Ø 98 -G1/8
Fluid	filtered air without lubrication. If lubricated air is used, it is recommended to use oil ISO VG32. Once applied, the lubrication should never be interrupted.

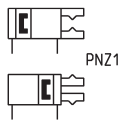
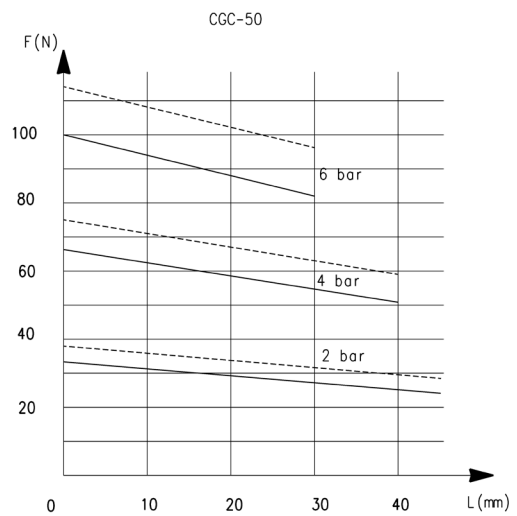
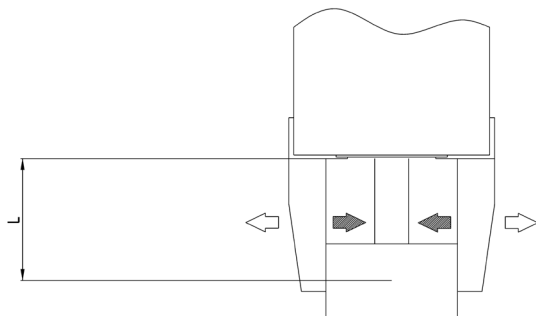
CODING EXAMPLE

CGC	-	050
-----	---	-----

CGC	SERIES	PNEUMATIC SYMBOL
050	SIZE 050 = 32 mm 064 = 45 mm 080 = 58 mm 100 = 77 mm 125 = 98 mm	PNZ1

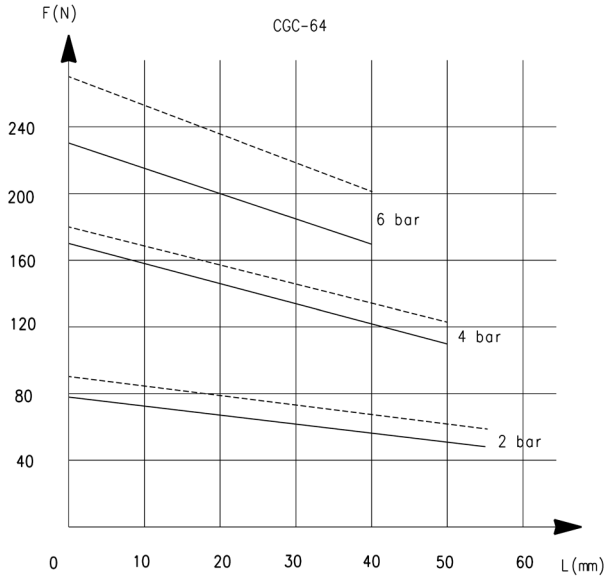
PNEUMATIC SYMBOLS

The pneumatic symbols which have been indicated in the CODING EXAMPLE are shown below.

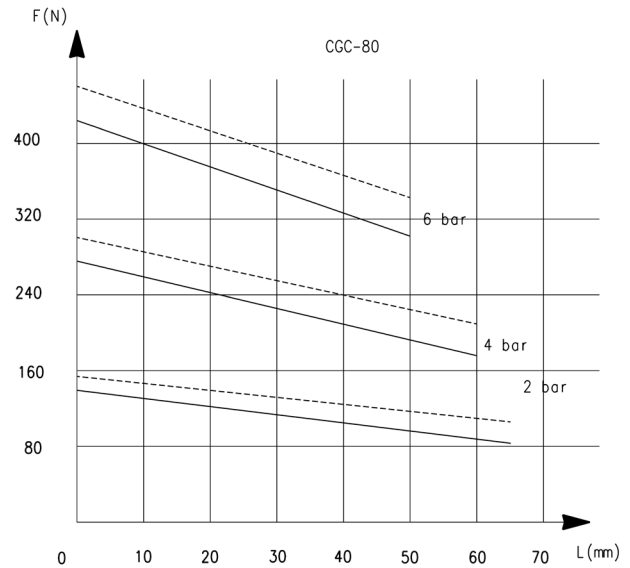

GRIPPING FORCE CHARACTERISTICS


F = Gripping Force
L = Gripping point length

GRIPPING FORCE CHARACTERISTICS

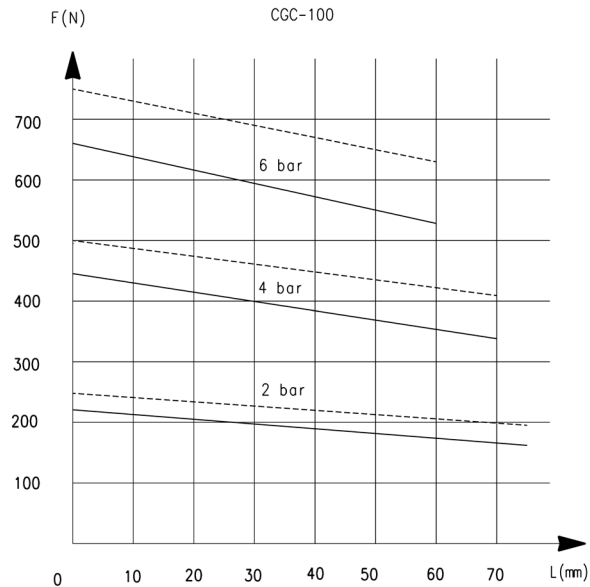


F = Gripping Force
L = Gripping point length

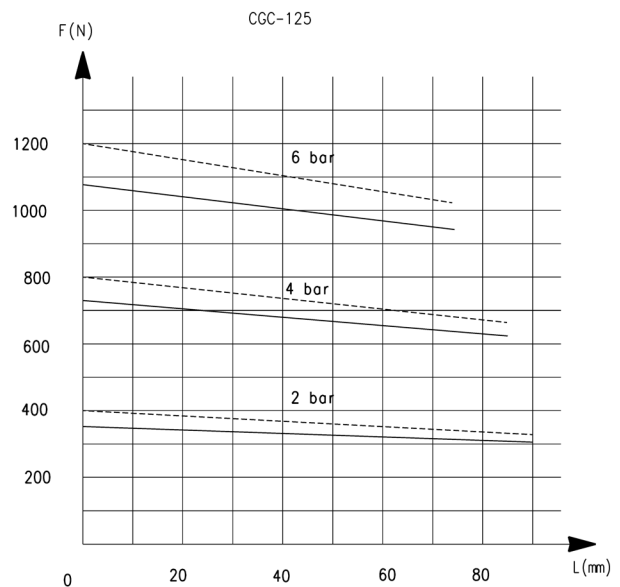


F = Gripping Force
L = Gripping point length

GRIPPING FORCE CHARACTERISTICS



F = Gripping Force
L = Gripping point length

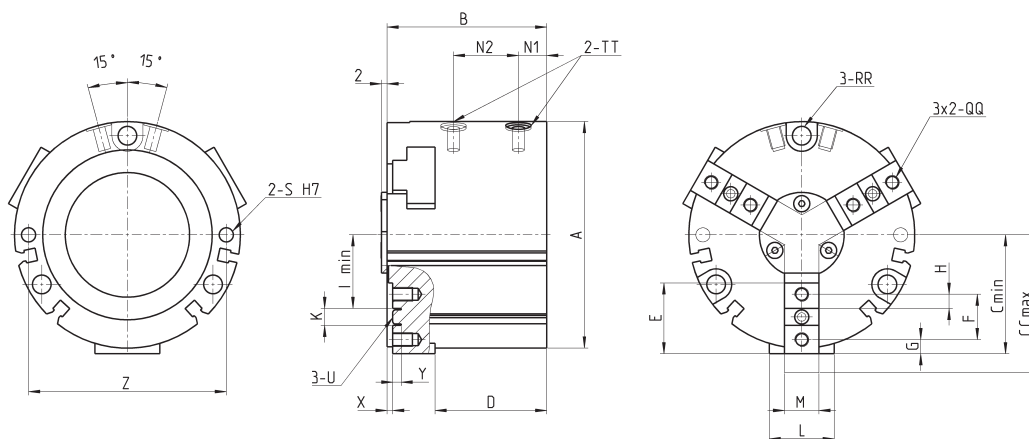


F = Gripping Force
L = Gripping point length

Grippers Series CGC



TT = port connection
 QQ = claw mounting holes
 RR = Mounting holes
 S = Mounting holes

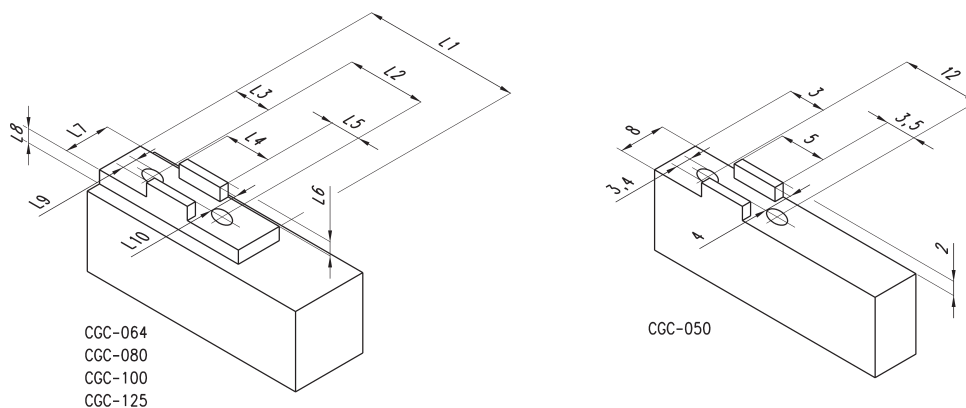


DIMENSIONS

Mod.	A	B	C	CC	D	E	F	G	H	I	K	L	M	N1	N2	RR	QQ	S	TT	U	X	Y	Z	Weight (g)
CGC-050	50	39	26,5	30,5	27	18	12	3	3,5	15	5	14	8	9	13,5	Ø 3,4	M3x0,5	Ø 3	M5	Ø 4	1	2	44	230
CGC-064	64	47,5	32	38	32	20	13	4	4	19	5	18	10,2	10	16	Ø 5,5	M4x0,7	Ø 4	M5	Ø 4	2	2,5	56	410
CGC-080	80	56,5	42	50	39,5	25	16	5	5	26	6	23	12,2	10	23	Ø 6,6	M5x0,8	Ø 5	M5	Ø 5	2	3	70	800
CGC-100	100	65	52	62	45,5	32	20	6	6	32	8	27	14,2	12	25	Ø 6,6	M6x1	Ø 5	PT 1/8	Ø 6	3	3	90	1400
CGC-125	125	76	65,5	78,5	52	40	24	8,5	8	41	8	30	16,2	13,5	27,5	Ø 9	M6x1	Ø 6	PT 1/8	Ø 6	3	3,5	112	2400

Support dimensions for grippers Series CGC

Dimensions of external mounting support of finger - gripping element



Mod.	L1	L2	L3	L4	L5	L6	L7	L8	L9	L10
CGC-064	20	13	4	5	4	2,5	10,2	4,5	4,5	4
CGC-080	25	16	5	6	5	3	12,2	5,5	5,5	5
CGC-100	32	20	6	8	6	3	14,2	5,5	6,6	6
CGC-120	40	24	8,5	8	8	3,5	16,2	5,5	6,6	6