

**GENERAL FEATURES**

- **TORK series S8510 (N.C) and S8511 (N.O)** pinch solenoid valves are 2/2 way normally closed and normally open
- **The tubing is the only material in contact with the fluid**
- **Fluid not in contact with metal parts**
- **Suitable for media without producing neither turbulent flows nor dead spaces. Liquids, water, aggressive media etc.**
- High flow rate under the same conditions of internal diameter of different solenoid valves
- Valves are suitable for soft silicone tubings or others similar as to elasticity and hardness (50 Shore A)
- Tubing are not included in our supply
- Compact and low weight valve enabling easy and quick installation
- High reliability, quality and performance
- Flow factor Kv of each valve is indicated, so that the flow Q can be calculated as a function of pressure
- Solenoid valves must be used with filtered fluids.
- Solenoid valve can be mounted in any position without affecting operation ; vertical with coil upwards preferred.
- If the soft tubings are different from the ones indicated, it's important that the tubing maximum wall thickness is the same as shown in the table.
- In case the tubings is not placed in its seat the solenoid valve could operate incorrectly

**ELECTRICAL CHARACTERISTICS**

- Continuous Duty : ED %100  
 Coil Insulation Class : H (180°C)  
 Coil Impregnation : Polyester Fiber Glass  
 Coil Encapsulation Material : Fiber Glass Reinforced  
 Ambient Temperature : from -10°C ; +60°C  
 Protection Degree : IP 65 (EN 60529) with coil duly fitted with the plug connector  
 Electric Plug Connection : DIN 46340 3-poles connectors (DIN 43650)  
 Connector Specification : ISO 4400 / EN 175301-803, Form A, Spade plug (Cable Ø 6-8 mm)  
 Electrical Safety : IEC 335  
 Standard Voltages : For AC 12V, 24V, 48V, 110V, 230V but Minimum power 18 W  
 For DC 12V, 24V, 48V, 110 V but Minimum power 20 W

- Other voltages on request;  
 Voltage Tolerances : For AC %-15 ; %+10, For DC %-5 ; %+10  
 Frequency : 50 Hz, other frequencies on request; (60 Hz)  
 On request; connector with LED  
 Specify coil voltage with order

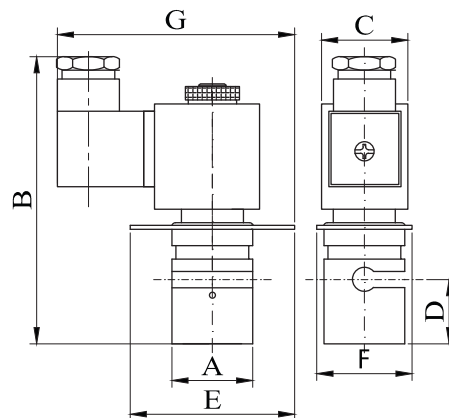
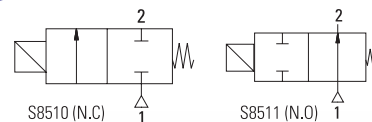
**MATERIALS IN CONTACT WITH FLUIDS**

- Body : Anodized Aluminum  
 Internal Parts : Stainless Steel  
 Pinch device : POM  
 Core Tube : Stainless Steel

**Normally Closed**

**Normally Open**

**NEW**



Dimensions (mm)

A	B	C	D	E	F	G
29,5	107	32	24	61	38	88

Valve Type / Order no	New Valve Type / Order no	Tubings		Tubings Max. Wall Thickness	Pinch Strength	Coil Power (W)	Weight
		Inside Diameter	Outside Diameter				
T-PIN / T-PIN.N	S8510 / S8511	(mm)	(mm)	(mm)	(kg)	(DC)	(kg)
T-PIN 103	S8510.090	6,5	9	1,5	1,3	20	0,31
T-PIN.N 103	S8511.090	6,5	9	1,5	1,3	20	0,31
T-PIN 100	S8510.080	5,5	8	1,5	1,15	20	0,31
T-PIN.N 100	S8511.080	5,5	8	1,5	1,15	20	0,31
T-PIN 102	S8510.070	4,5	7	1,5	1	20	0,31
T-PIN.N 102	S8511.070	4,5	7	1,5	1	20	0,31
T-PIN 101	S8510.060	3,5	6	1,5	0,84	20	0,31
T-PIN.N 101	S8511.060	3,5	6	1,5	0,84	20	0,31

**Useful Informations**

1 bar:14,5 PSI:10 mH2O :10 N/cm<sup>2</sup> :1 kg/cm<sup>2</sup>:100000 Pa, 1 PSI:69 mbar,1 m<sup>3</sup>/h:4,405 GPM:16,7 L/d 1 Gallon / minute:0,227 m<sup>3</sup>/h, 0°C:89,6 F, 1 kg:10 N